



DCF Engineering, Inc.
 PO Box 879 ■ 109 Brady Ct.
 Cary, NC 27512-0879
 (919) 467-3853

● **OWNER:**
 CATAWBA COUNTY
 NORTH CAROLINA

● **PROJECT:**
 CATAWBA COUNTY
 REPLACEMENT
 BRIDGES

● **SHEET TITLE:**
 10 FT. x 50 FT.
 PEDESTRIAN AND
 LIGHT TRUCK BRIDGE
 SUPERSTRUCTURE

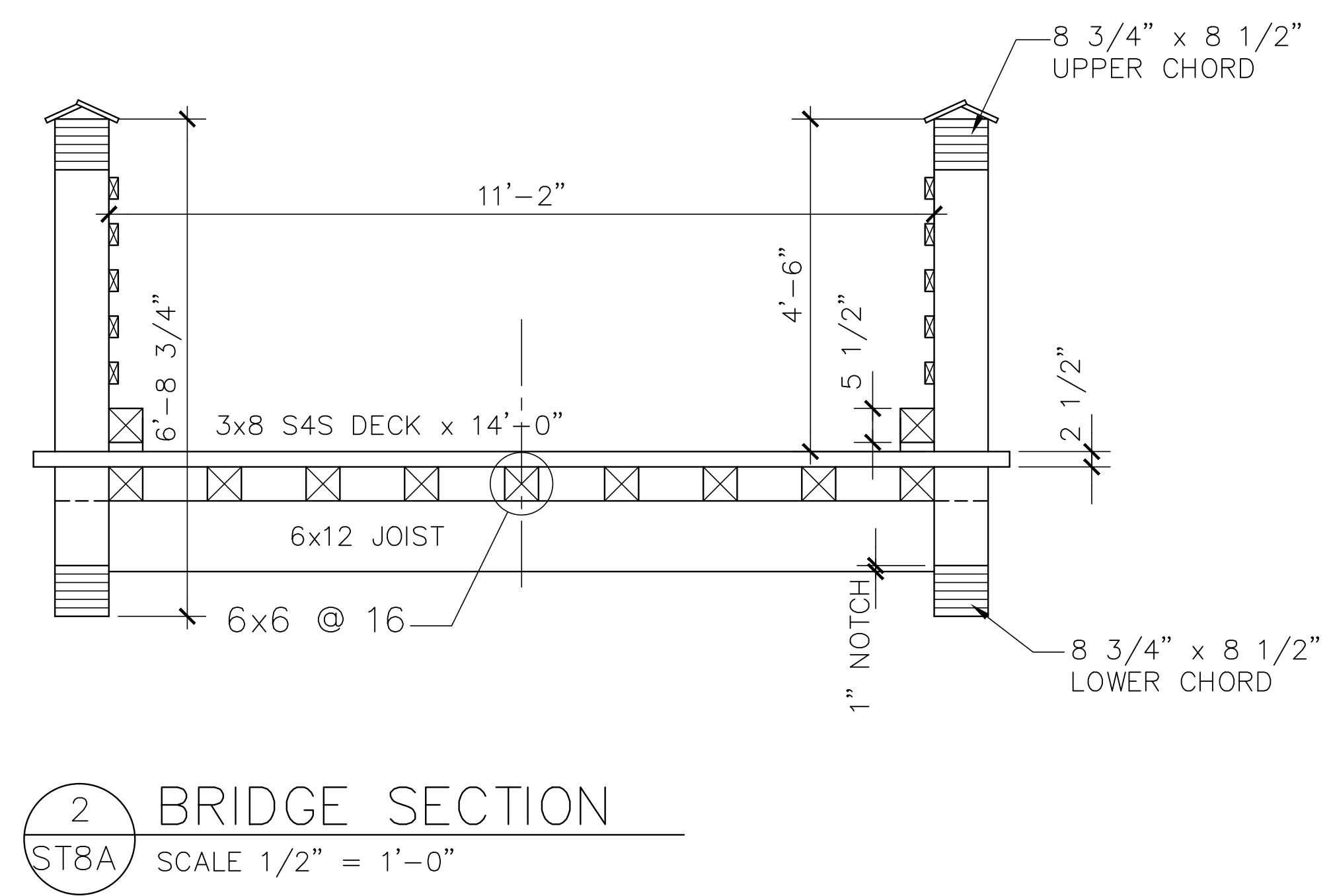
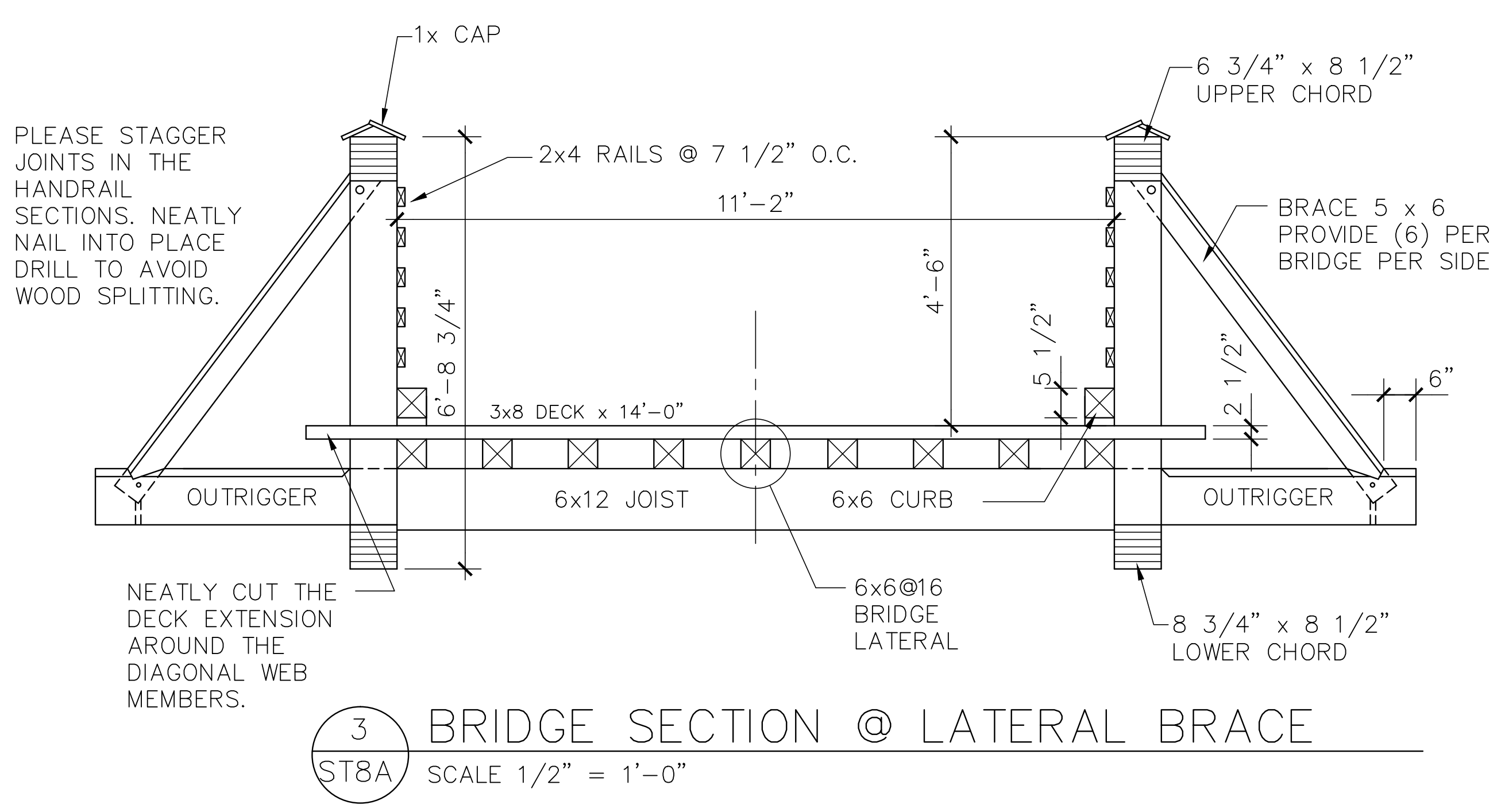
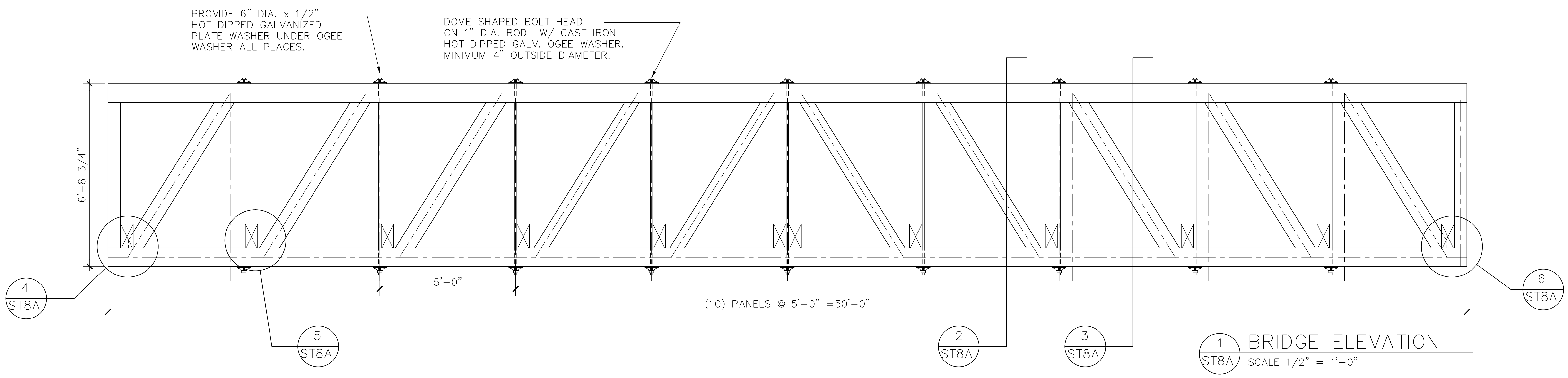
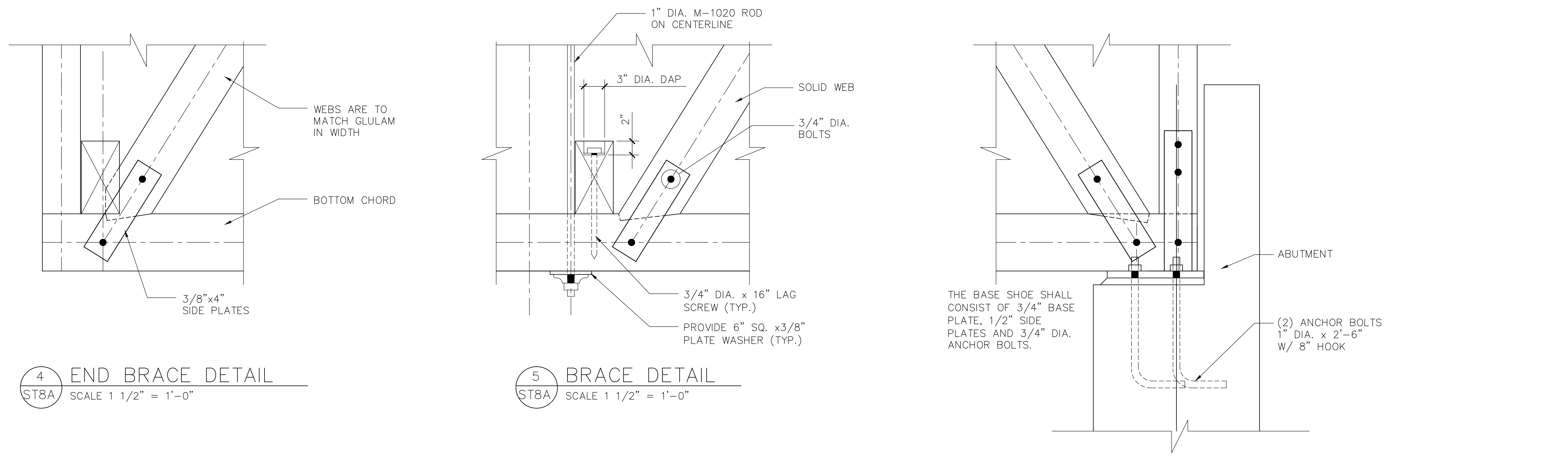
● **Issue Date:**

● **Revision:**

● **Project Number:**

● **Sheet Number:**

S1



99047



DCF Engineering, Inc.
 PO Box 879 ■ 109 Brady Ct.
 Cary, NC 27512-0879
 (919) 467-3853

GENERAL NOTES

A. LIVE LOADS

- 1. LIVE LOAD 100 PSF
- 2. TRUCK LOAD 5 TON
- 3. WIND LOAD 80 MPH

CODE: 2002 EDITION NORTH CAROLINA STATE BUILDING CODE

COMPLY WITH AASHTO REQUIREMENTS FOR PEDESTRIAN BRIDGES.

B. FOUNDATIONS

- 1. THE ASSUMED SOIL BEARING PRESSURE USED FOR DESIGN IS 2000 PSF.
- 2. ALL FILL SHALL BE PLACED IN AN 8 INCH MAXIMUM LOOSE LIFTS AND SHALL BE COMPACTED TO A MINIMUM OF 95 PER CENT MAXIMUM DRY DENSITY AS DETERMINED IN ACCORDANCE WITH ASTM D-698 (STANDARD PROCTOR METHOD).
- 3. THE ABUTMENT DETAILS ARE FURNISHED IN THE DRAWINGS. THE DEPTH OF EMBEDMENT AND TYPE OF FOOTING MAY VARY DEPENDING ON THE RESULTS OF AN ON SITE EXPLORATION.
- 4. IF ROCK IS ENCOUNTERED, USE THE FOOTING ON ROCK DETAIL. IF SOFT RESIDUAL SILTS ARE ENCOUNTERED, USE THE ALTERNATE FOOTING DETAIL. FILTER FABRIC AND STONE MAY NOT BE REQUIRED DEPENDING ON CONDITIONS ENCOUNTERED. ADJUST REINFORCING ACCORDINGLY DEPENDING ON THE FINAL ABUTMENT GEOMETRY.
- 5. NOTIFY PATON/ZUCCHINO PROJECT MANAGER 24 HOURS PRIOR TO EXCAVATION OF FOOTINGS.

C. CAST-IN-PLACE CONCRETE

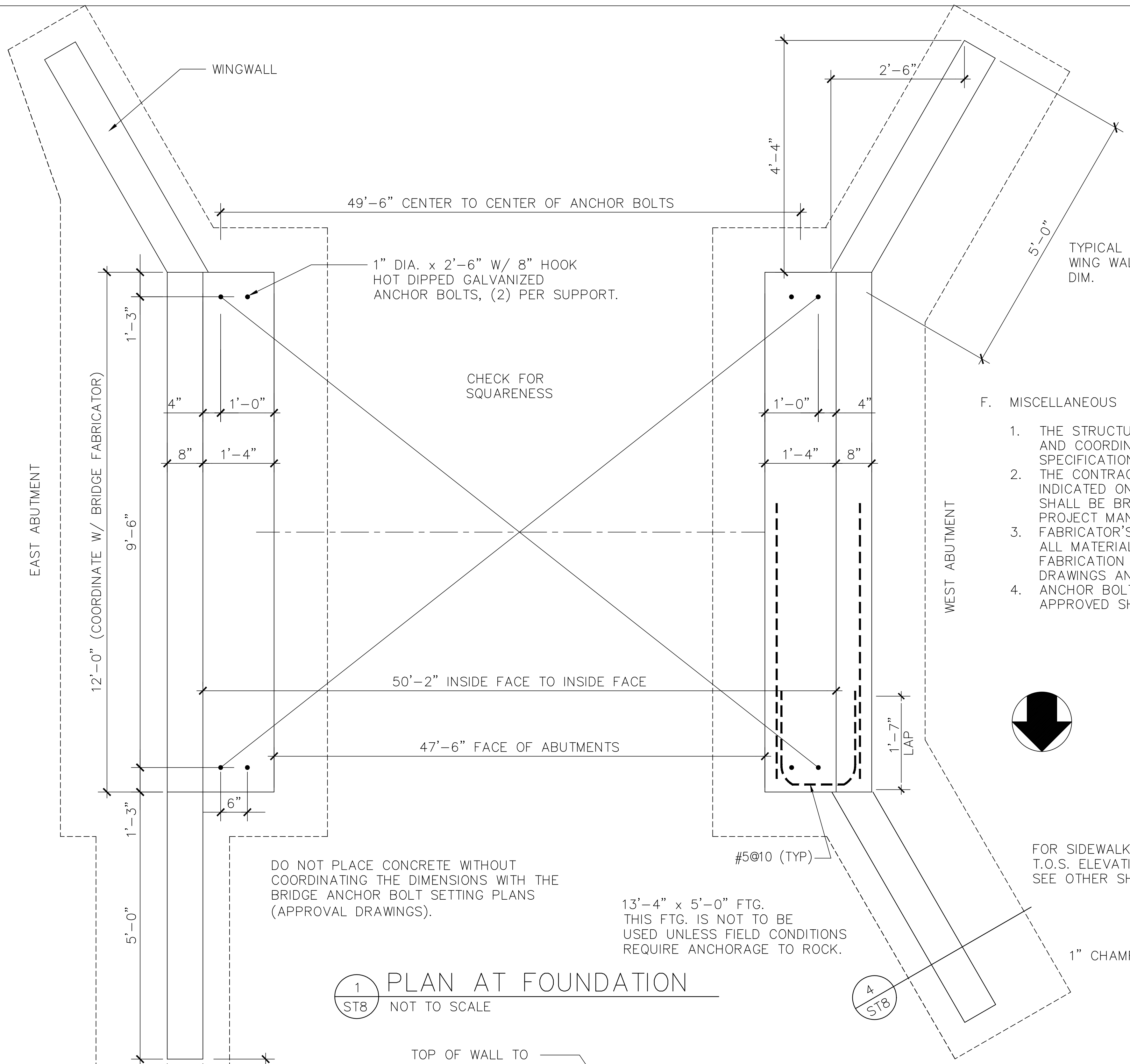
- 1. CONCRETE WORK SHALL CONFORM TO ACI SPECIFICATIONS.
- 2. ALL CAST-IN-PLACE CONCRETE 28-DAY COMPRESSIVE STRENGTH SHALL BE 3500 PSI IN ACCORDANCE WITH ACI 318.

D. REINFORCING STEEL

- 1. ALL REINFORCING STEEL SHALL BE ASTM A-615, GRADE 60.
- 2. PLACEMENT OF THE REINFORCING STEEL SHALL BE REVIEWED BY THE STRUCTURAL ENGINEER PRIOR TO PLACING CONCRETE.
- 3. DETAIL AND FABRICATE REINFORCING STEEL IN ACCORDANCE WITH ACI-315. REINFORCING STEEL SHALL BE PLACED IN ACCORDANCE WITH THE PROJECT DOCUMENTS.
- 4. FABRICATE IN ACCORDANCE WITH APPROVED SHOP DRAWINGS.
- 5. DO NOT HEAT BEND REINFORCING BARS.

F. MISCELLANEOUS

- 1. THE STRUCTURAL DRAWINGS SHALL BE USED IN CONJUNCTION WITH AND COORDINATED WITH OTHER CONTRACT DRAWINGS AND SPECIFICATIONS.
- 2. THE CONTRACTOR SHALL VERIFY ALL EXISTING SITE CONDITIONS INDICATED ON THESE DRAWINGS. ANY VARIATION OF CONDITIONS SHALL BE BROUGHT TO THE ATTENTION OF THE TOWN OF CARY PROJECT MANAGER BEFORE PROCEEDING WITH CONSTRUCTION.
- 3. FABRICATOR'S SHOP DRAWINGS SHALL SHOW AND NOTE ALL ALL MATERIAL REQUIRED IN SUFFICIENT DETAIL FOR PROPER FABRICATION AND ERECTION IN ACCORDANCE WITH THE CONTRACT DRAWINGS AND DOCUMENTS.
- 4. ANCHOR BOLTS SHALL BE SET IN ACCORDANCE WITH THE APPROVED SHOP DRAWING ANCHOR BOLT SETTING PLAN.



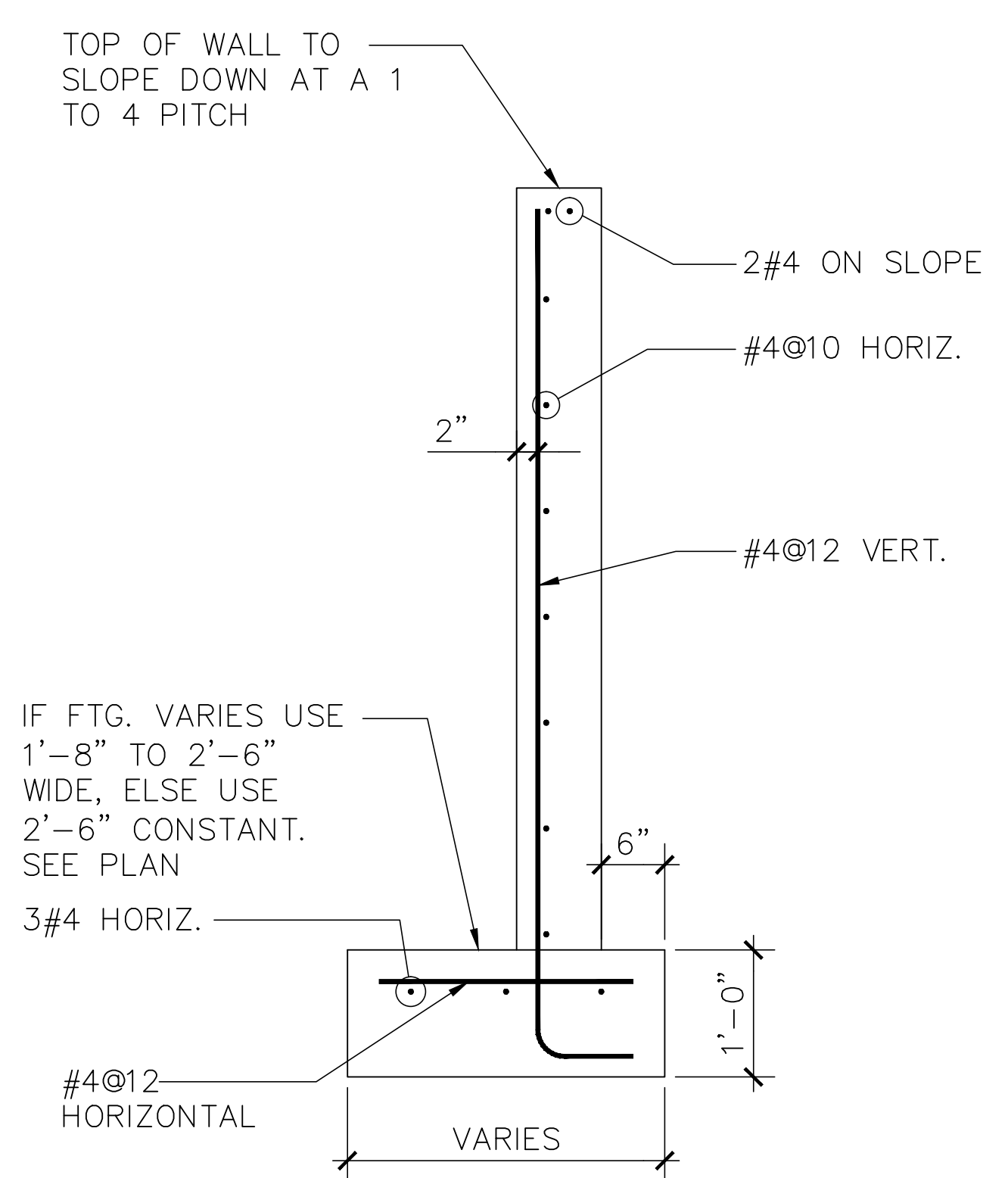
1 PLAN AT FOUNDATION
 STB NOT TO SCALE

DO NOT PLACE CONCRETE WITHOUT COORDINATING THE DIMENSIONS WITH THE BRIDGE ANCHOR BOLT SETTING PLANS (APPROVAL DRAWINGS).

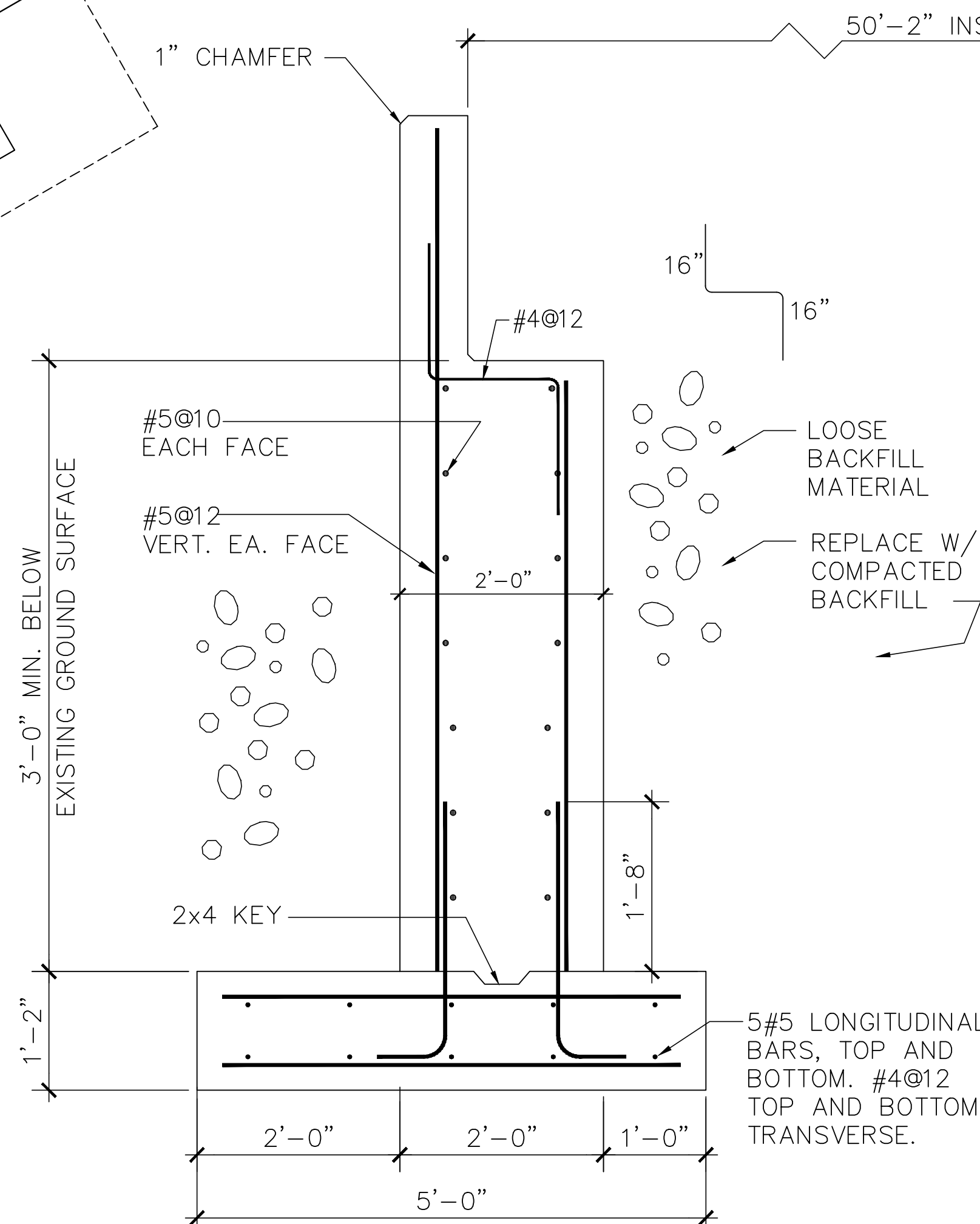
13'-4" x 5'-0" FTG. THIS FTG. IS NOT TO BE USED UNLESS FIELD CONDITIONS REQUIRE ANCHORAGE TO ROCK.

FOR SIDEWALK LAYOUT, T.O.S. ELEVATIONS SEE OTHER SHEETS.

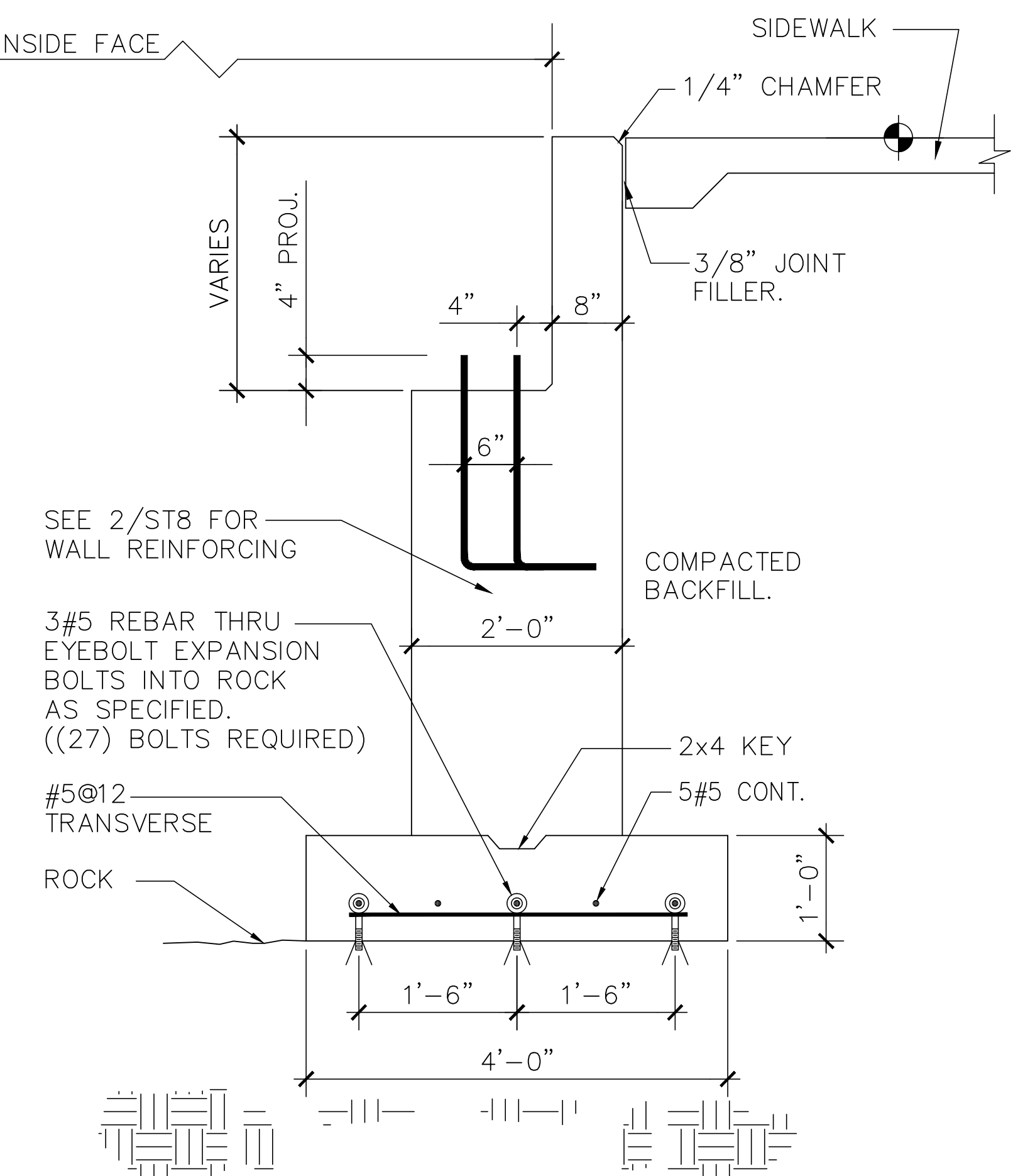
FOR SIDEWALK LAYOUT, T.O.S. ELEVATIONS SEE OTHER SHEETS.



4 WING WALL SECTION
 STB SCALE: 3/4" = 1'-0"



2 BASE BID FOOTING DETAIL
 STB SCALE 3/4" = 1'-0"



3 FOOTING ON ROCK
 STB SCALE 3/4" = 1'-0"

THIS DETAIL IS NOT TO BE USED UNLESS FIELD CONDITIONS REQUIRE ANCHORAGE TO ROCK.

◆ **ELECTRICAL ENGINEER:**
 TRIANGLE ENGINEERING ASSOCIATES
 RALEIGH, NC

● **OWNER:**
 TOWN OF CARY
 CARY, NC

● **PROJECT:**
 CARY TENNIS CENTER

● **SHEET TITLE:**
 10 FT. x 50 FT. PEDESTRIAN AND LIGHT TRUCK BRIDGE SUB-STRUCTURE

● **Issue Date:**

● **Revision:**
 12/14/01 REVISION TO FOUNDATION DIMENSIONS.

12/20/01 WING WALL DIMS. CHANGED WINGWALL FTGS.

● **Project Number:**

● **Sheet Number:**

S2

99047