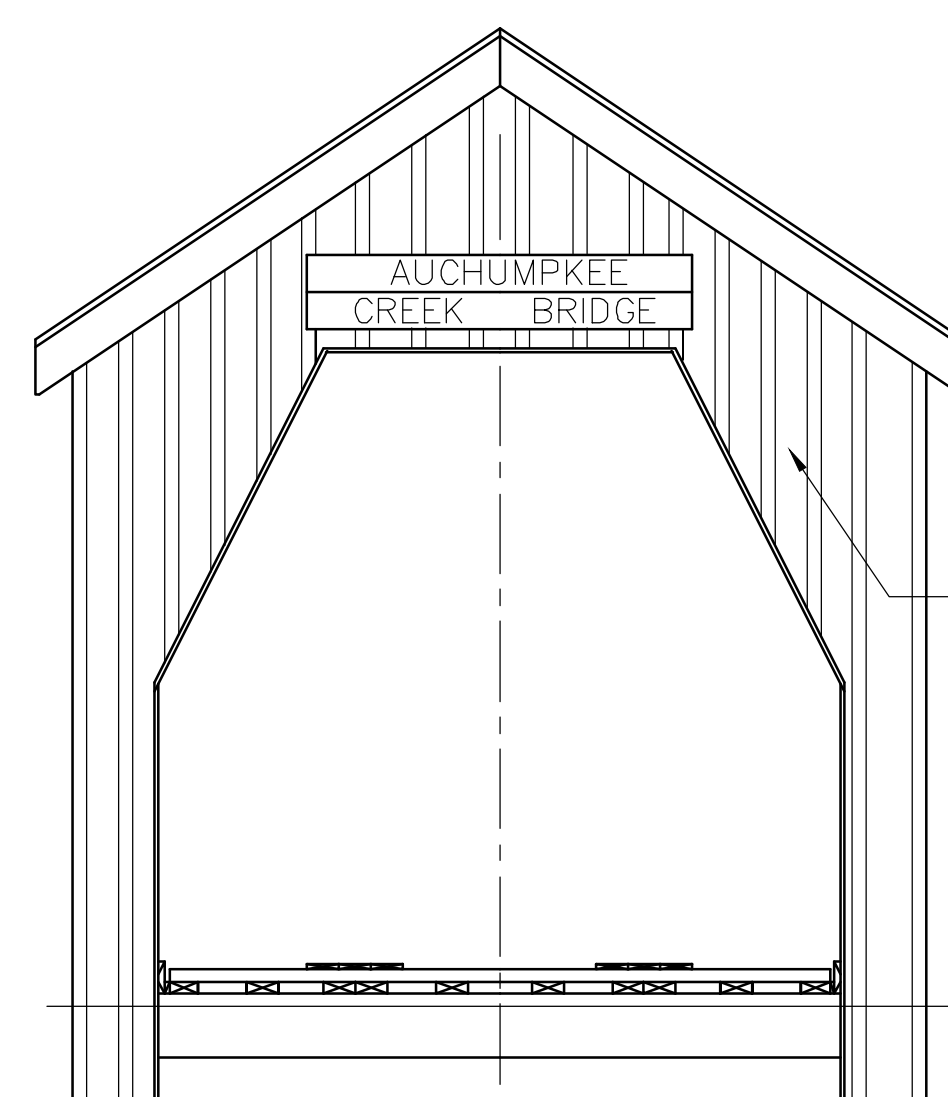


2
S1

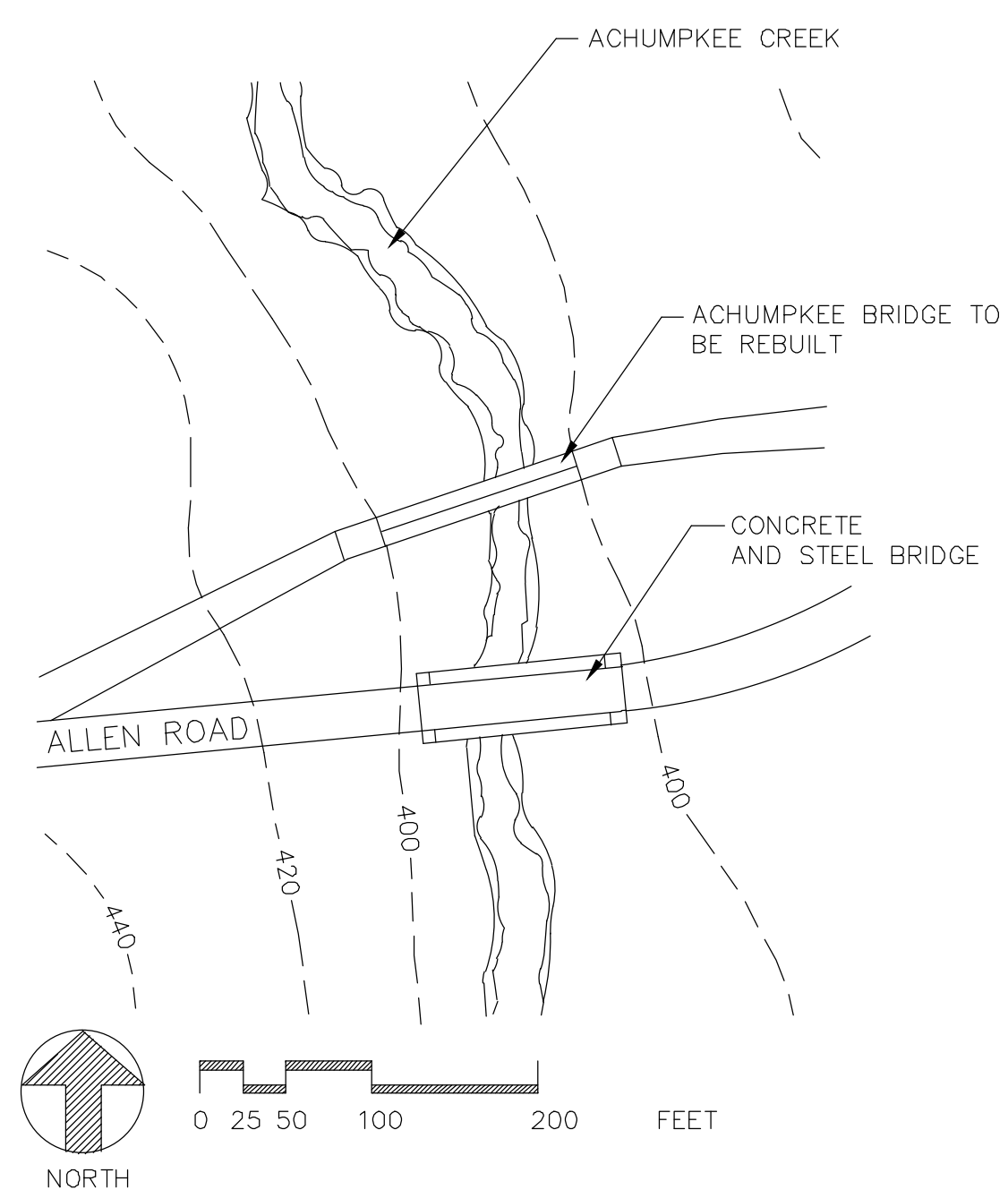
EAST PORTAL ELEVATION
SCALE 1/4"=1'-0"



3
S1

WEST PORTAL ELEVATION
SCALE 1/4"=1'-0"

RE-USE EXISTING WEST PORTAL IF POSSIBLE. FINAL DECISION TO BE MADE IN THE FIELD BY THE ENGINEER AND BUILDER.



4
S1

VICINITY MAP
SCALE AS SHOWN

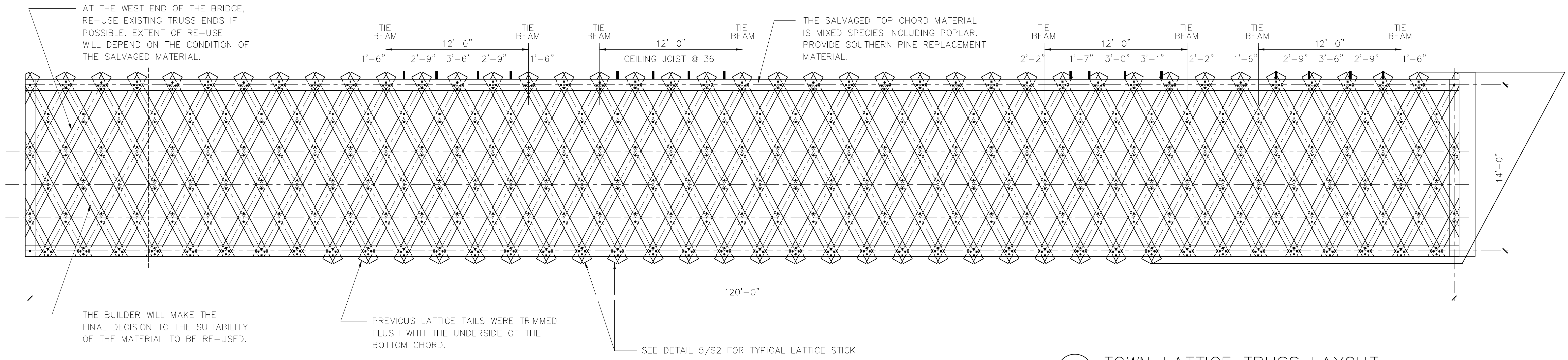
PROJECT NO. 95052
UPSON COUNTY
STATION: N/A

AUCHUMPKEE CREEK COVERED BRIDGE
OVER AUCHUMPKEE CREEK
THOMASTON, GEORGIA
UPSON CO. GEORGIA

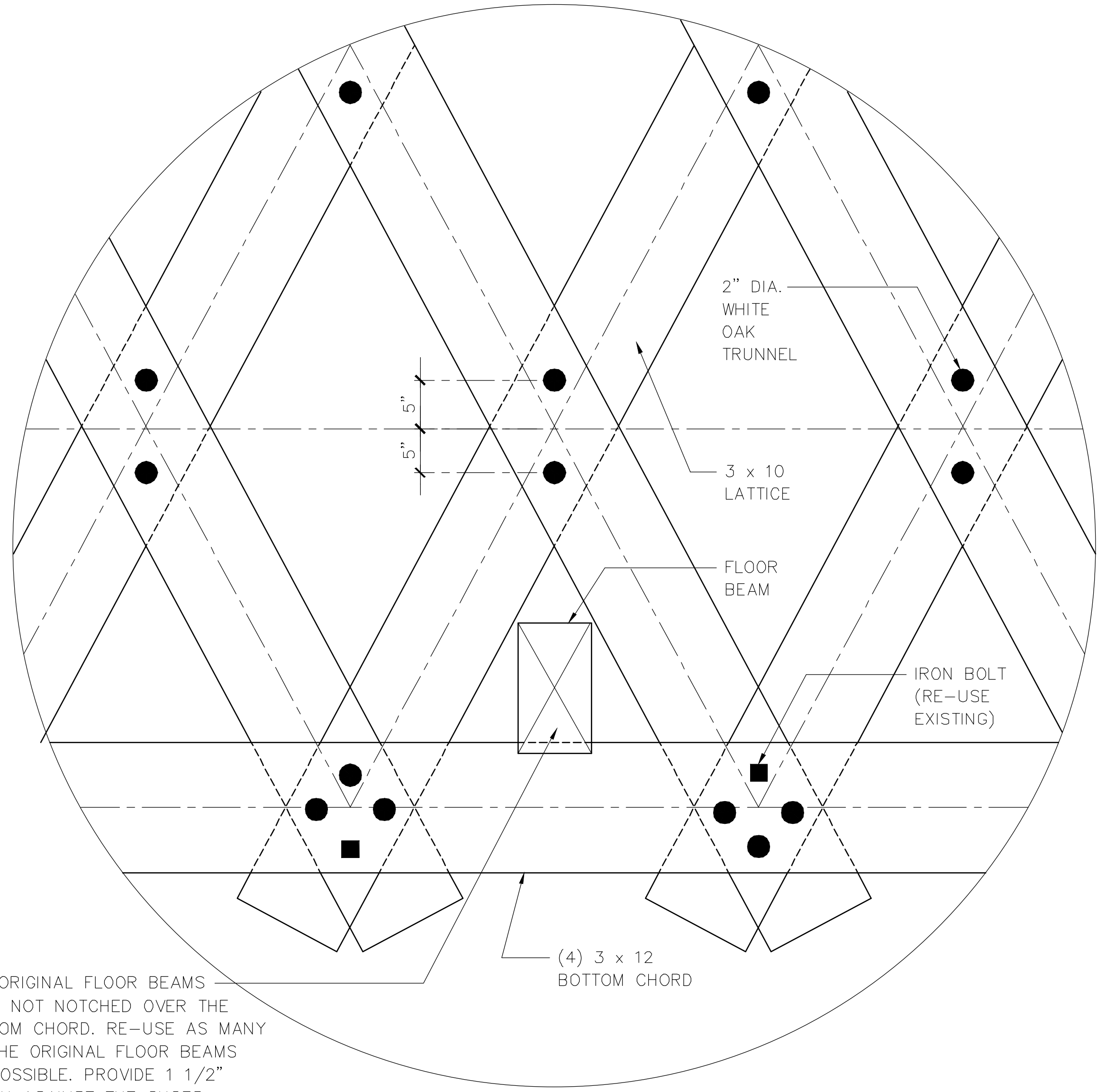
2.0 NW JCT. US80 ON US 19, THEN 0.7 R. ON ALLEN RD.
AUGUST 1995

REVISIONS				SHEET No. S1
No	BY:	DATE:	No	
1			3	TOTAL SHEETS 9
2			4	



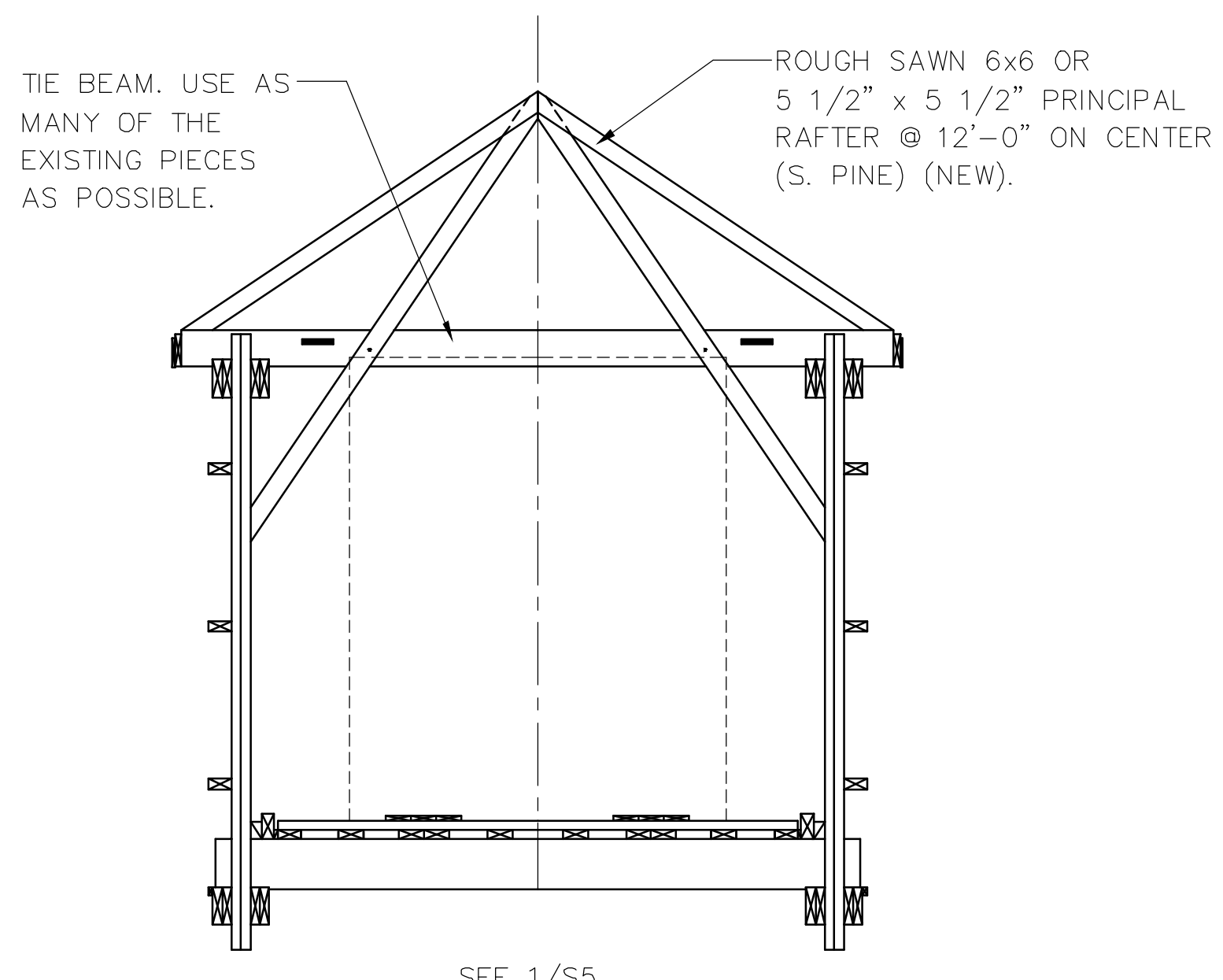


1 TOWN LATTICE TRUSS LAYOUT
S2 SCALE 1/4"=1'-0"

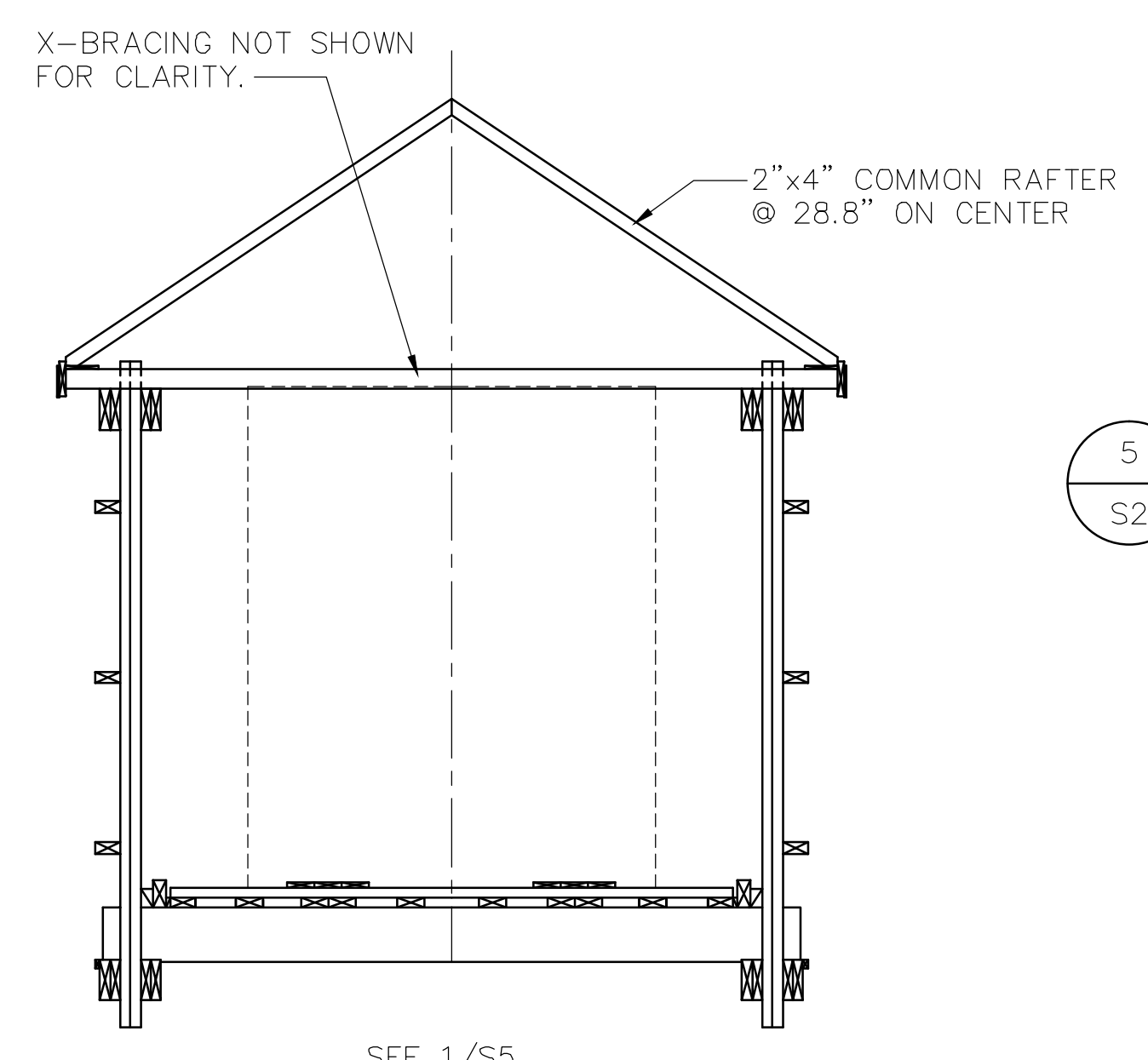


4 LATTICE DETAIL
S2 SCALE 1 1/2"=1'-0"

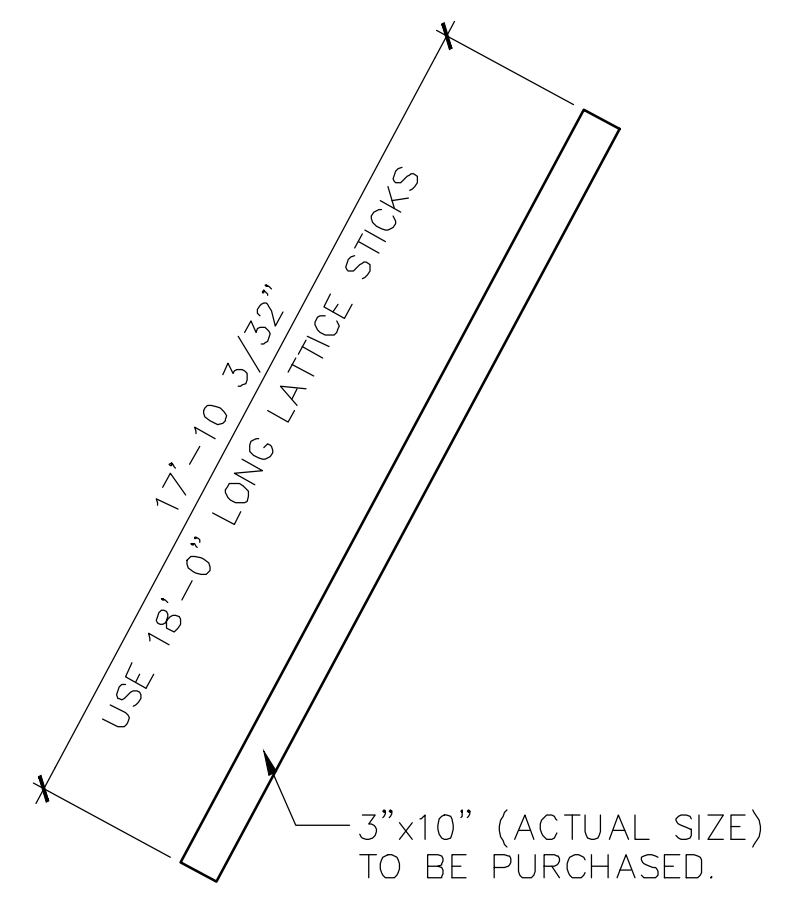
THE ORIGINAL FLOOR BEAMS WERE NOT NOTCHED OVER THE BOTTOM CHORD. RE-USE AS MANY OF THE ORIGINAL FLOOR BEAMS AS POSSIBLE. PROVIDE 1 1/2" NOTCH AGAINST THE CHORD.



3 BRIDGE CROSS SECTION
S2 SCALE 1/4"=1'-0"



2 BRIDGE CROSS SECTION
S2 SCALE 1/4"=1'-0"



5 TYPICAL LATTICE STICK
S2 SCALE 1/4"=1'-0"

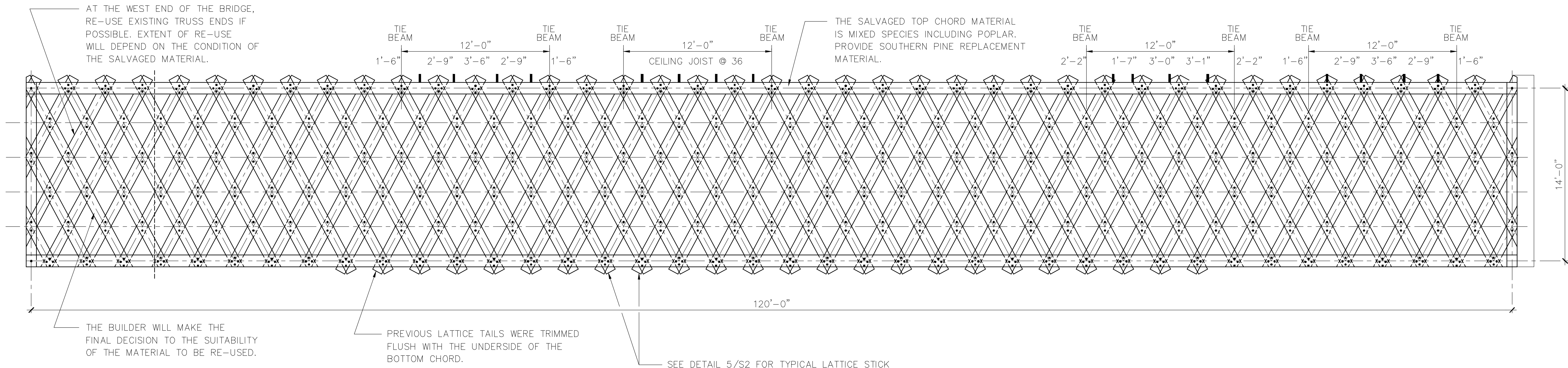
PROJECT NO. 95052
UPSON COUNTY
STATION: N/A

AUCHUMPKEE CREEK COVERED BRIDGE
OVER AUCHUMPKEE CREEK
THOMASTON, GEORGIA
UPSON CO. GEORGIA
2.0 NW JCT. US 80 ON US 19, THEN 0.7 R. ON ALLEN RD.
AUGUST 1995

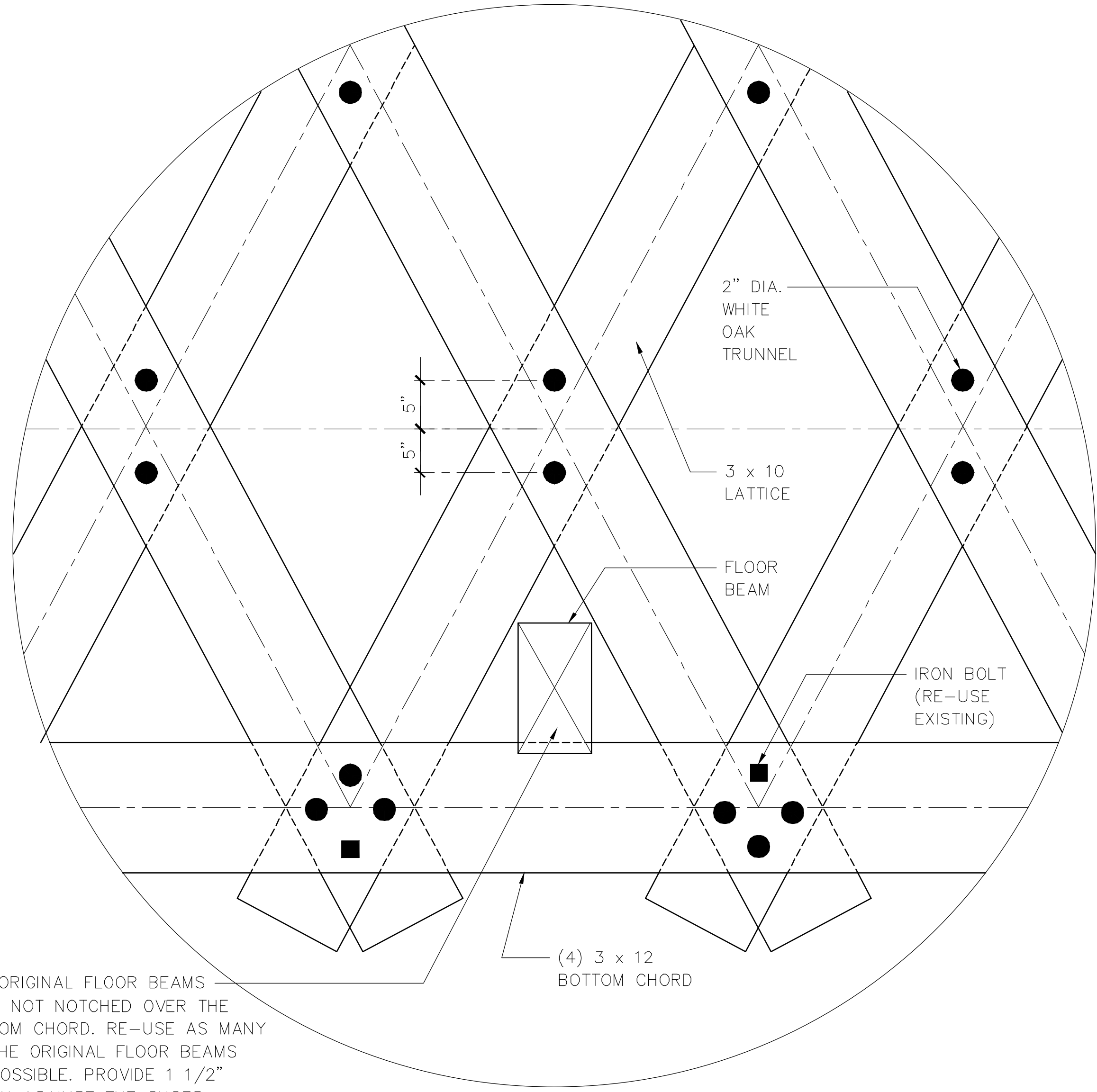


REVISIONS				SHEET No.
No	BY:	DATE:	No	DATE:
1			3	
2			4	

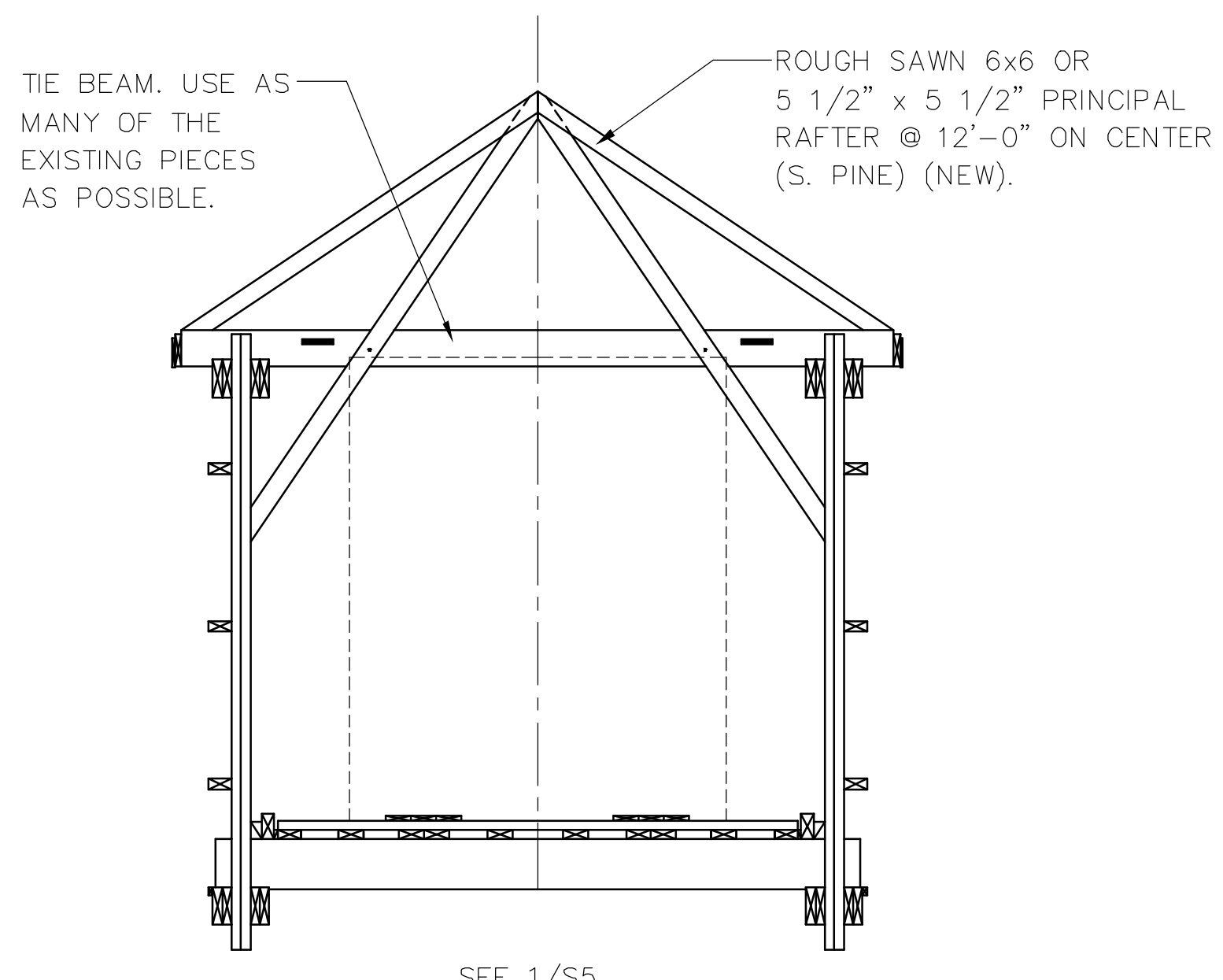
TOTAL SHEETS 9



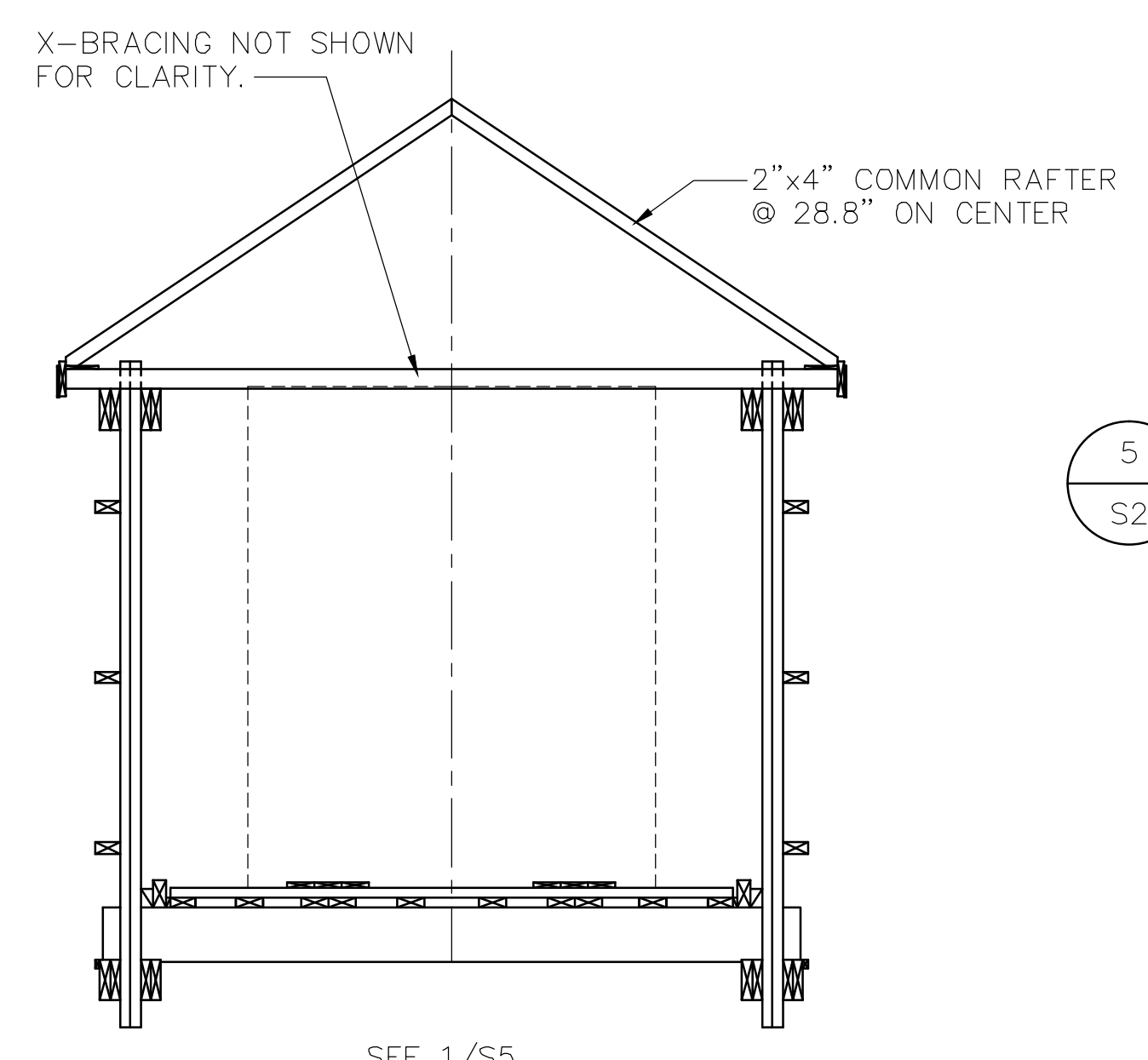
1 TOWN LATTICE TRUSS LAYOUT
S2 SCALE 1/4"=1'-0"



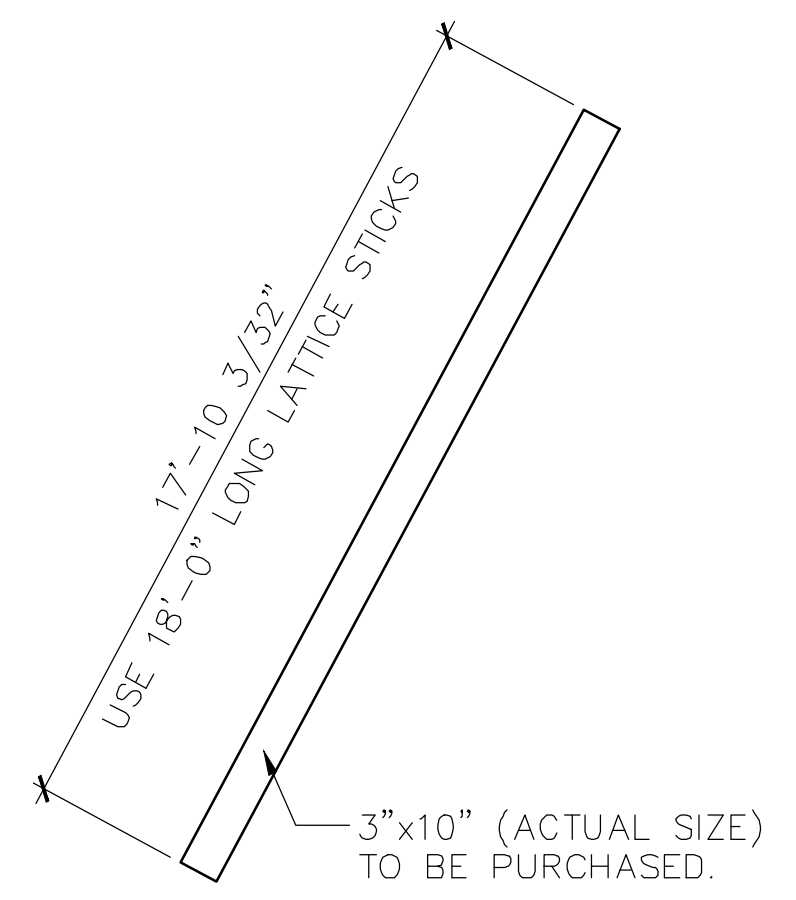
4 LATTICE DETAIL
S2 SCALE 1 1/2"=1'-0"



3 BRIDGE CROSS SECTION
S2 SCALE 1/4"=1'-0"



2 BRIDGE CROSS SECTION
S2 SCALE 1/4"=1'-0"



5 TYPICAL LATTICE STICK
S2 SCALE 1/4"=1'-0"

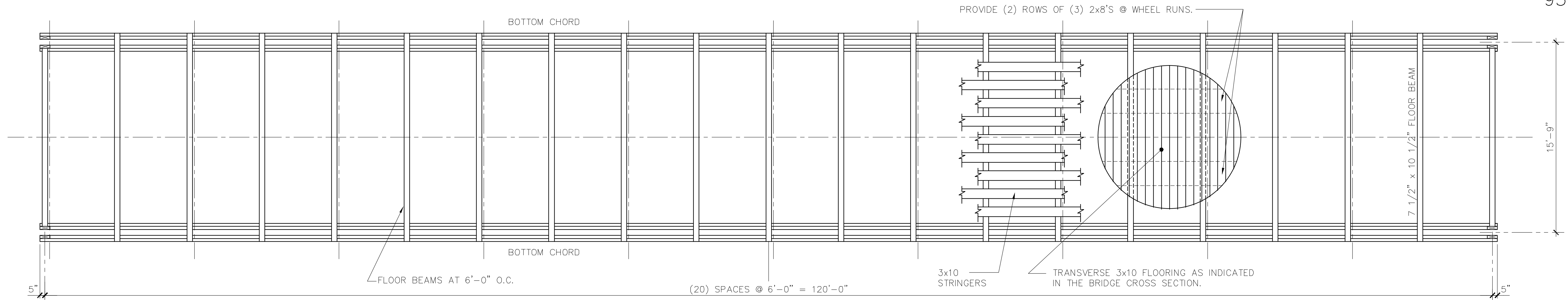
PROJECT NO. 95052
UPSON COUNTY
STATION: N/A

AUCHUMPKEE CREEK COVERED BRIDGE
OVER AUCHUMPKEE CREEK
THOMASTON, GEORGIA
UPSON CO. GEORGIA
2.0 NW JCT. US 80 ON US 19, THEN 0.7 R. ON ALLEN RD.
AUGUST 1995



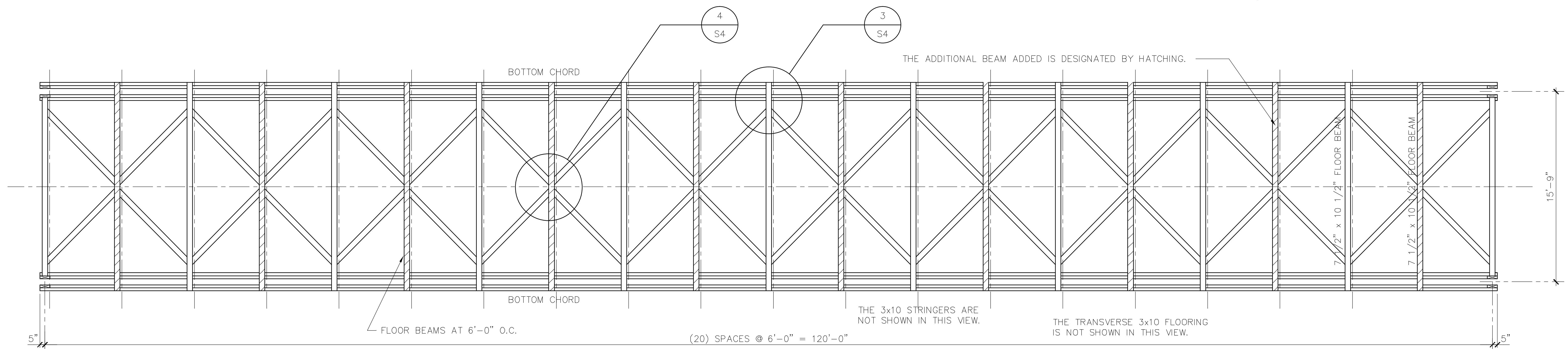
DRAWN BY : CG DATE :
CHECKED BY : D.C. FISCHETTI DATE : 8/29/95

REVISIONS		SHEET No.	
No	BY:	DATE:	No
1		3	S2
2		4	TOTAL SHEETS
			9



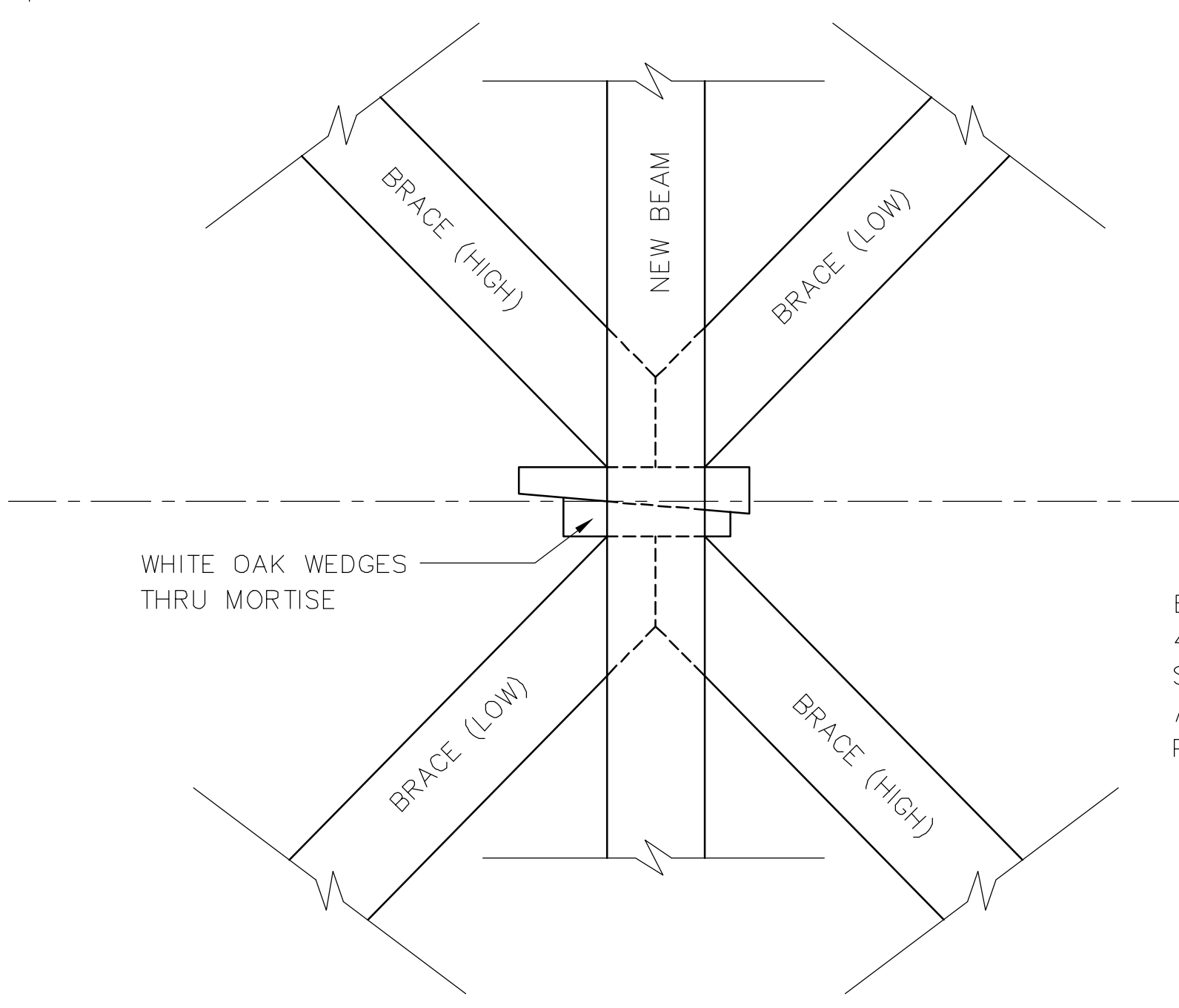
LOWER FLOOR X-BRACING IS NOT SHOWN IN THIS VIEW.

1 FLOOR FRAMING PLAN
SCALE 1/4"=1'-0"

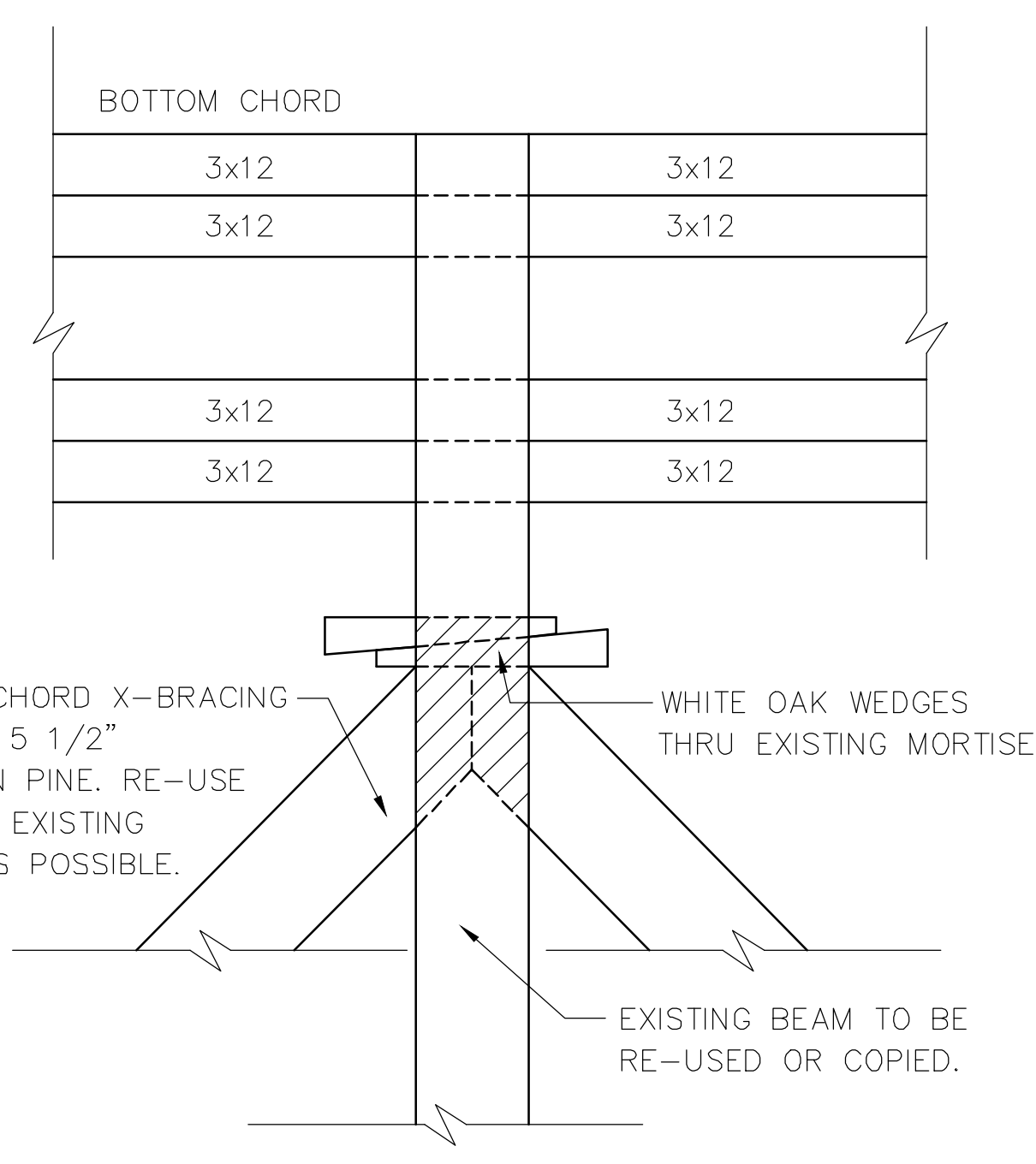


2 LOWER CHORD X-BRACING (RE-WORKED)
SCALE 1/4"=1'-0"

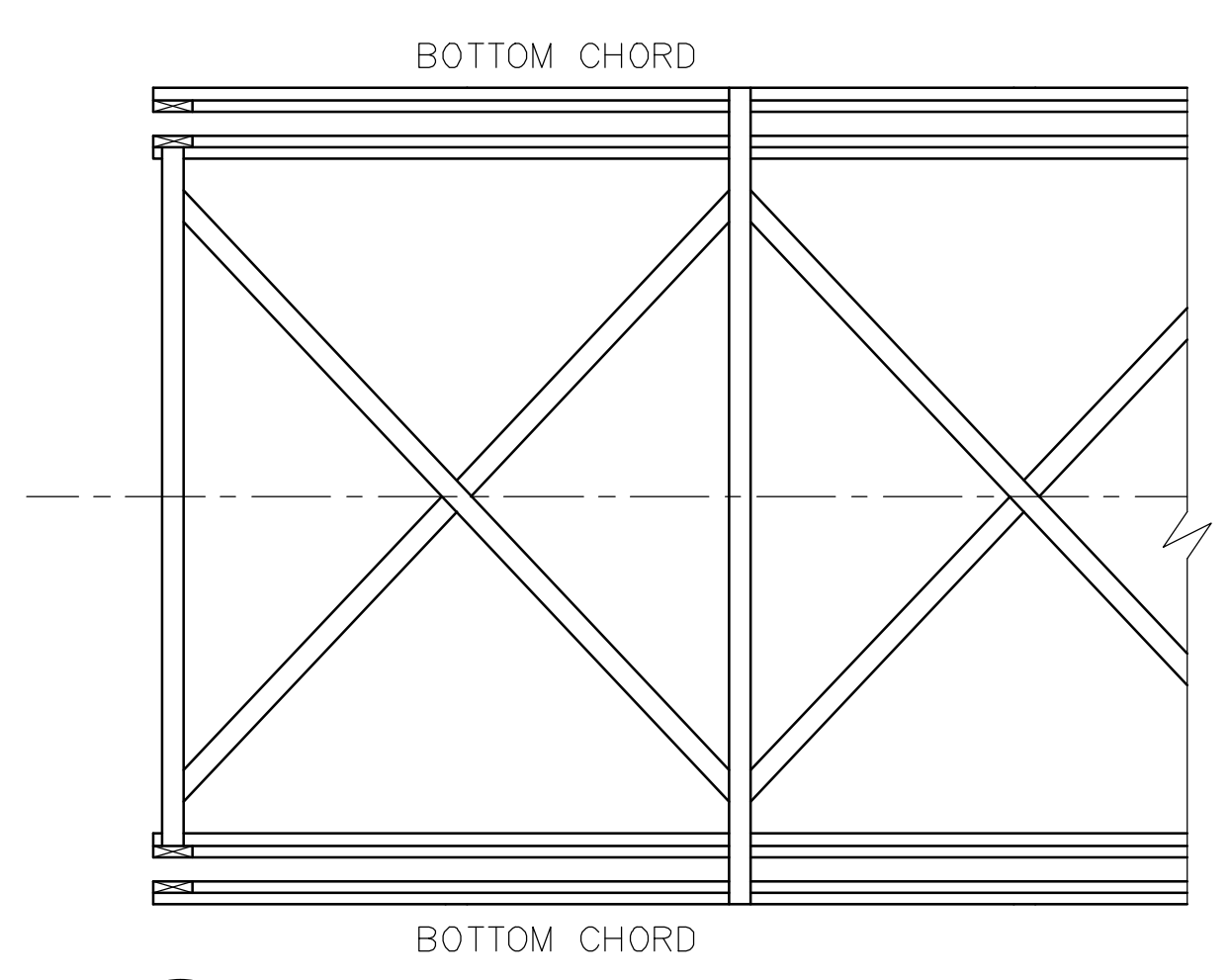
4 1/2" x 5 1/2" X-BRACING IS TO BE RE-WORKED TO FIT BETWEEN THE NEW INTERMEDIATE FLOOR BEAM (HATCHED). RE-USE AS MANY EXISTING FLOOR BEAMS AS POSSIBLE.



4 X-BRACING INTERSECTION
SCALE 1 1/2"=1'-0"



3 X-BRACING DETAIL (PLAN)
SCALE 1 1/2"=1'-0"



5 ORIGINAL X-BRACING LAYOUT
SCALE 1/4"=1'-0"

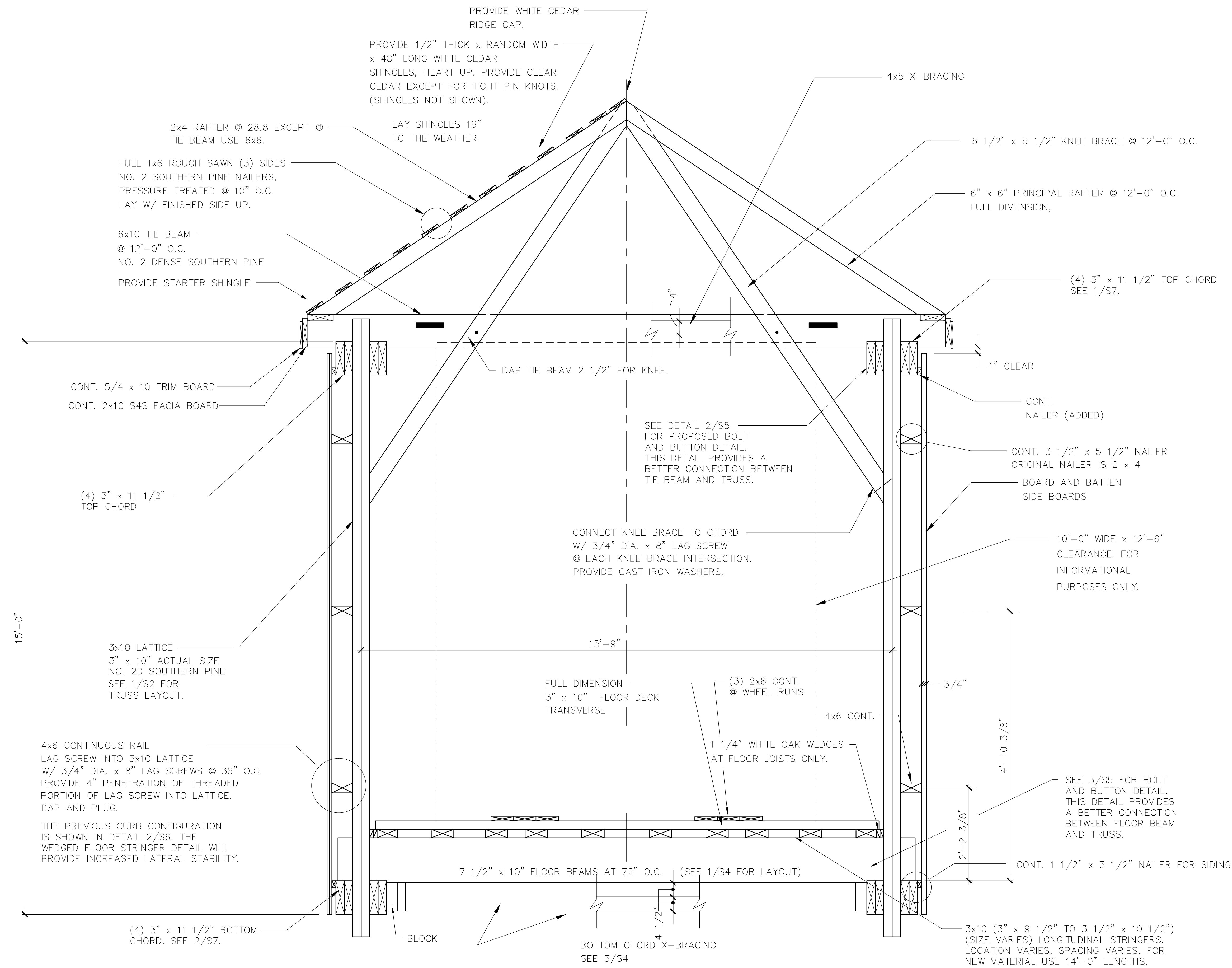
PROJECT NO. 95052
UPSON COUNTY
STATION: N/A

AUCHUMPKEE CREEK COVERED BRIDGE
OVER AUCHUMPKEE CREEK
THOMASTON, GEORGIA
UPSON CO. GEORGIA

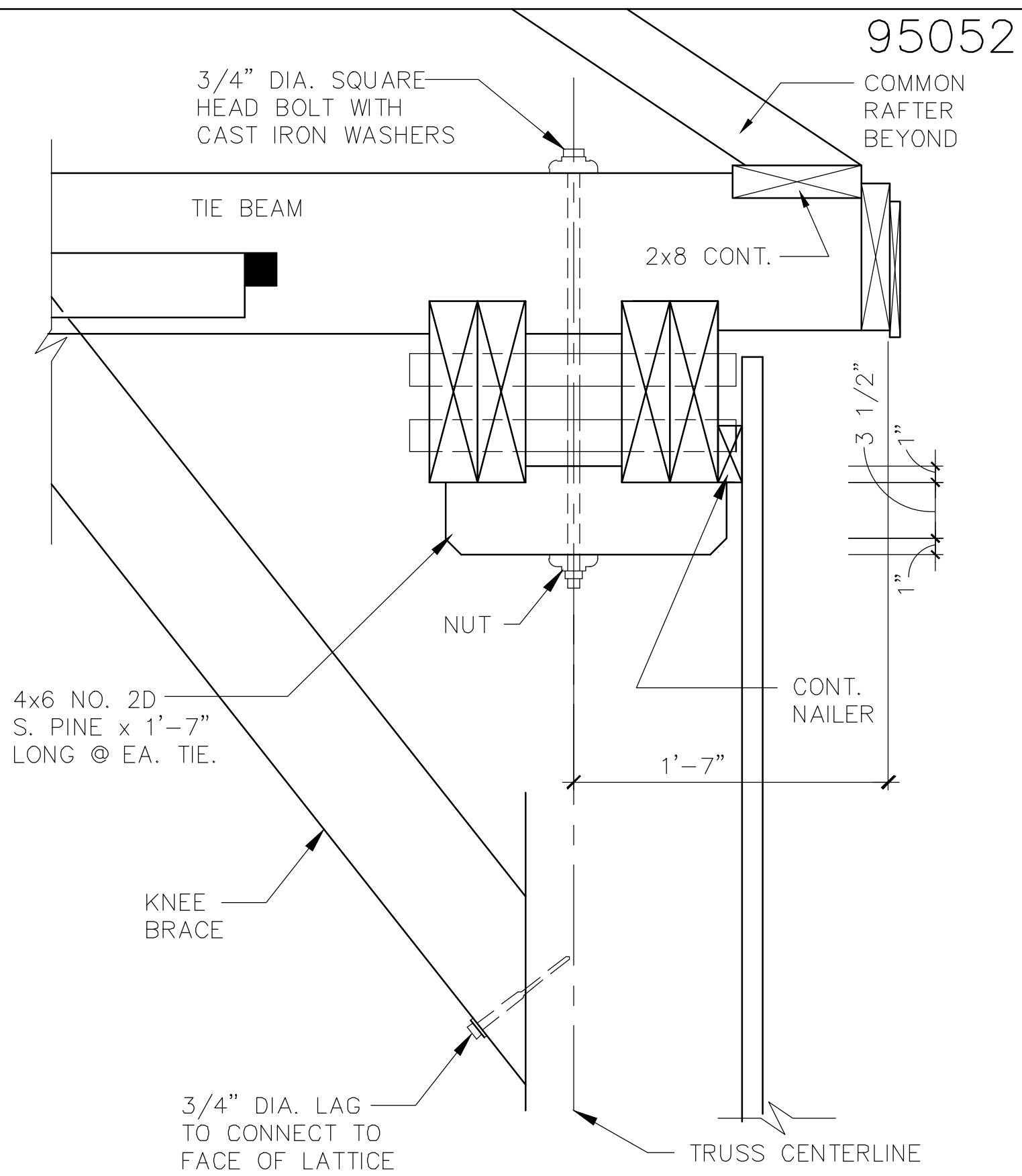
2.0 NW JCT. US 80 ON US 19, THEN 0.7 R. ON ALLEN RD.
DECEMBER 1996

REVISIONS		SHEET No.	
No	BY:	DATE:	No
1		3	4
2		4	9

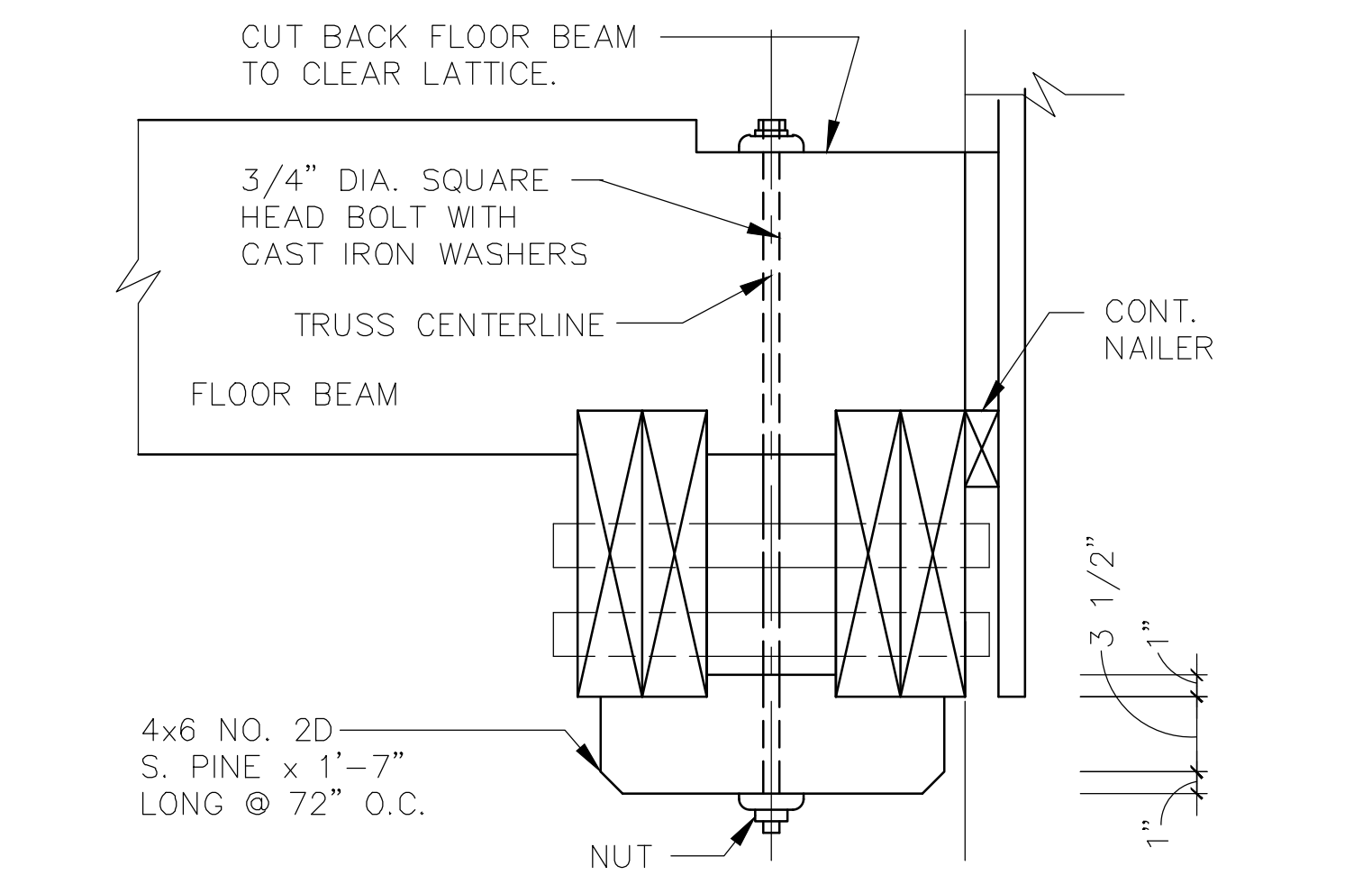




1 BRIDGE CROSS SECTION
SCALE 3/4"=1'-0"



2 BOLT AND BUTTON DETAIL (NEW)
SCALE 1 1/2"=1'-0"



3 DETAIL @ FLOOR BEAM (NEW)
SCALE 1 1/2"=1'-0"

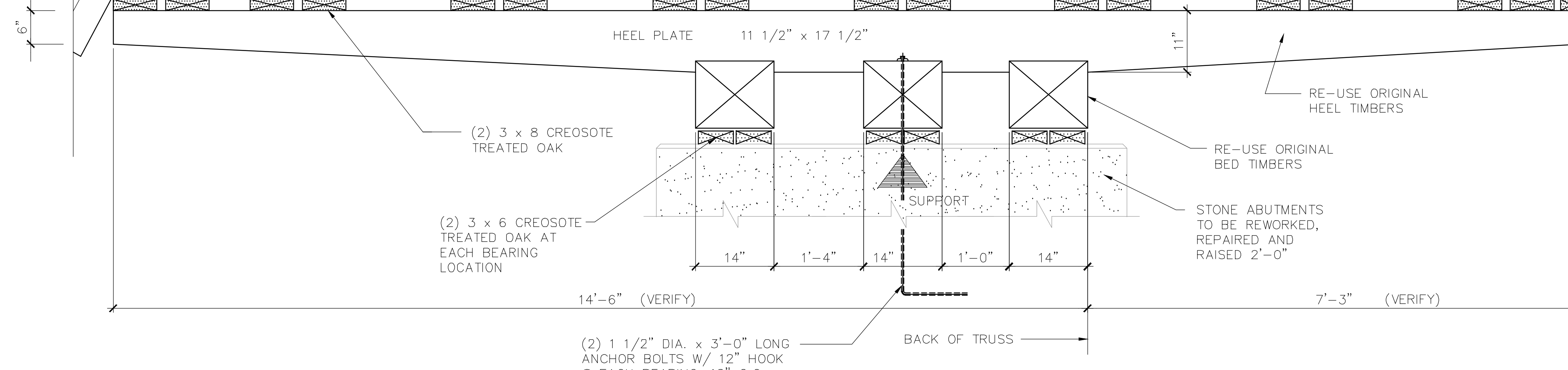
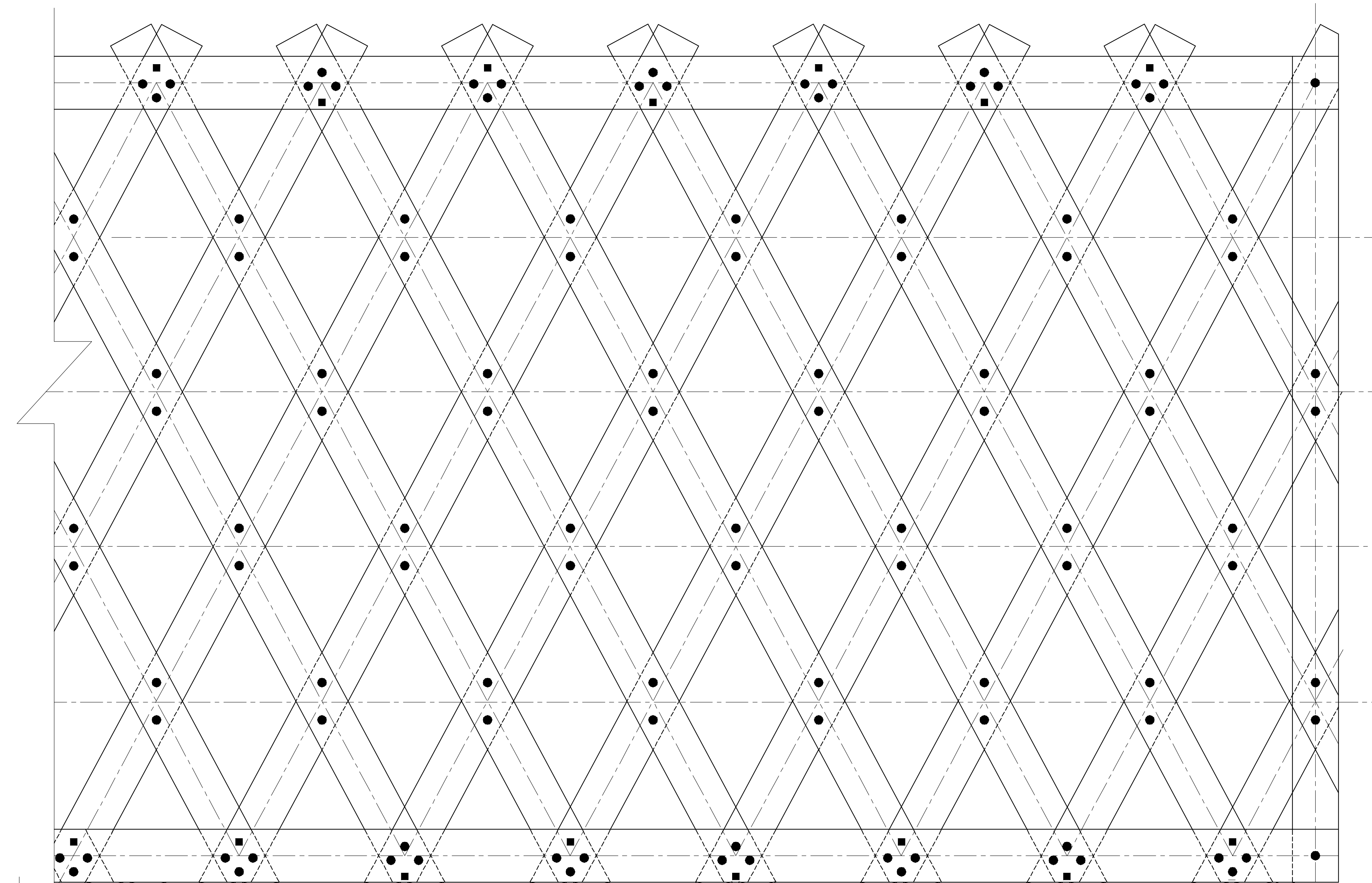
PROJECT NO. 95052
UPSON COUNTY
STATION: N/A

AUCHUMPKEE CREEK COVERED BRIDGE
OVER AUCHUMPKEE CREEK
THOMASTON, GEORGIA
UPSON CO. GEORGIA
2.0 NW JCT. US80 ON US 19, THEN 0.7 R. ON ALLEN RD.

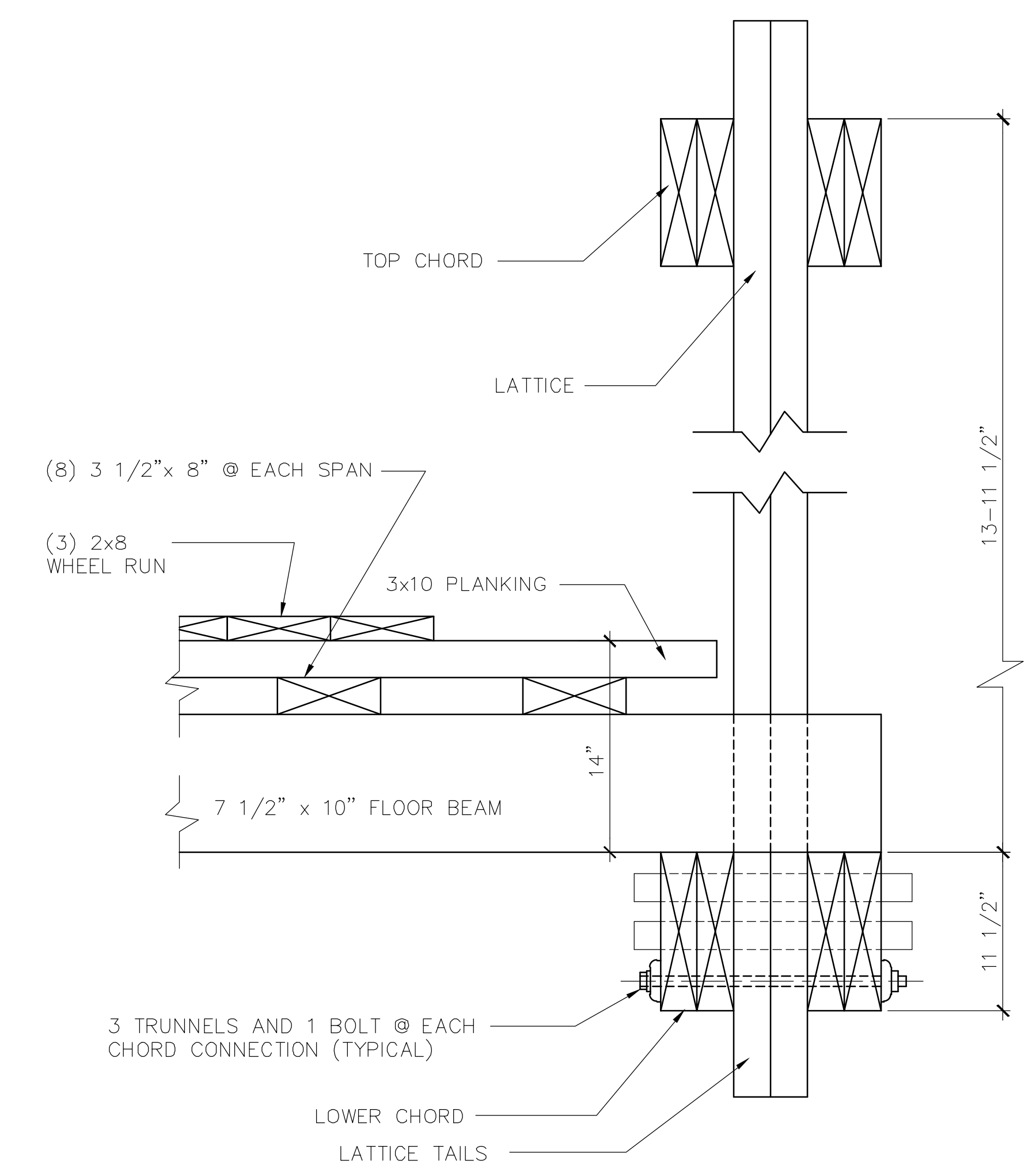


AUGUST 1995					
REVISIONS					
No.	BY:	DATE:	No.	BY:	DATE:
1			3		
2			4		

SHEET No. **S5**
TOTAL SHEETS 9



1 TRUSS BEARING DETAIL
SCALE 3/4"=1'-0"



2 ORIGINAL FLOOR DETAIL
SCALE 1 1/2"=1'-0"

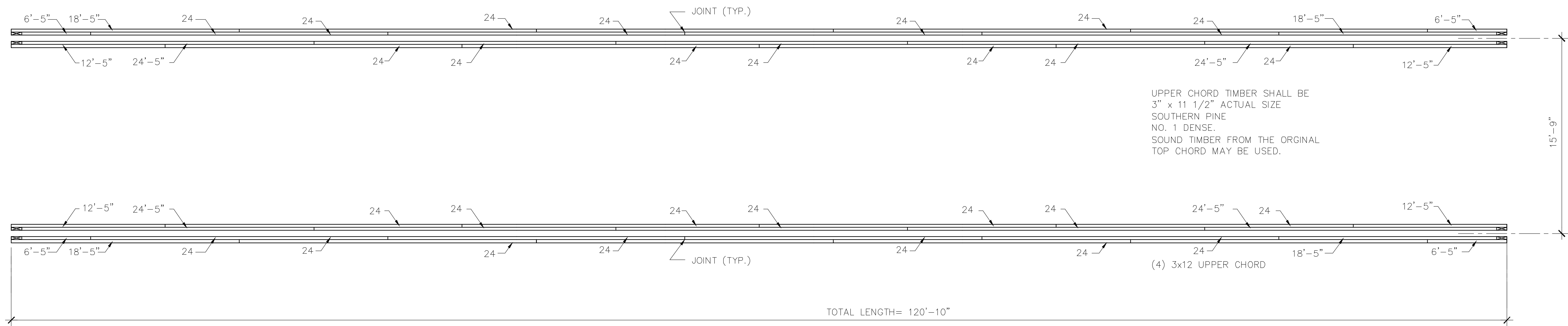
PROJECT NO. 95052
UPSON COUNTY
STATION: N/A

AUCHUMPKEE CREEK COVERED BRIDGE
OVER AUCHUMPKEE CREEK
THOMASTON, GEORGIA
UPSON CO. GEORGIA
2.0 NW JCT. US 80 ON US 19, THEN 0.7 R. ON ALLEN RD.
AUGUST 1995

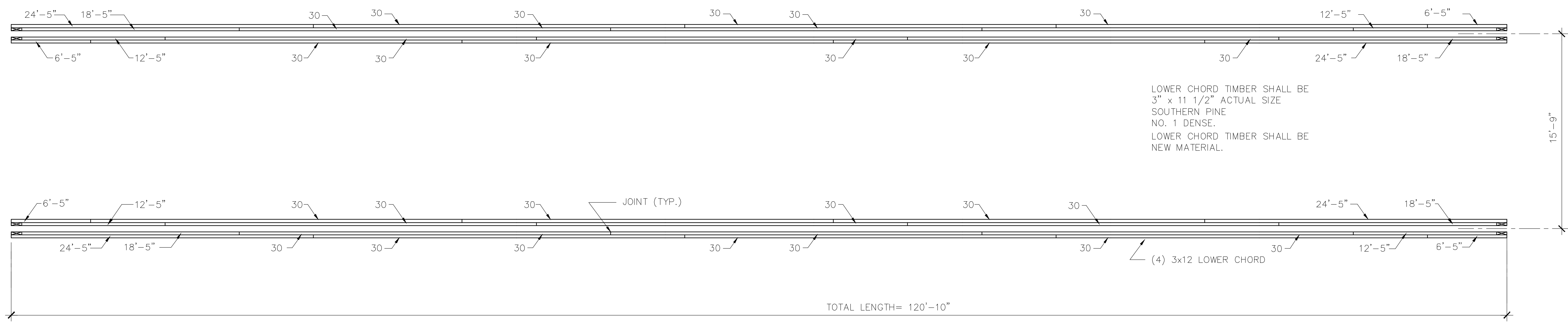


REVISIONS		SHEET No.
No	DATE	
1	3	S6
2	4	

TOTAL SHEETS: 9



1 PLAN VIEW OF UPPER CHORD
S7 SCALE 1/4"=1'-0"



2 PLAN VIEW OF LOWER CHORD
S7 SCALE 1/4"=1'-0"

PROJECT NO. 95052
UPSON COUNTY
STATION: N/A

AUCHUMPKEE CREEK COVERED BRIDGE
OVER AUCHUMPKEE CREEK
THOMASTON, GEORGIA
UPSON CO. GEORGIA
2.0 NW JCT. US 80 ON US 19, THEN 0.7 R. ON ALLEN RD.
AUGUST 1995



DRAWN BY : CG DATE :
CHECKED BY : D.C. FISCHETTI DATE : 8/29/95

REVISIONS				SHEET No.	
No	BY:	DATE:	No	BY:	DATE:
1			3		
2			4		

TOTAL SHEETS 9

GENERAL NOTES

A. LIVE LOADS

- 1. ROOF LIVE LOAD 30 PSF (1993 BOCA)
- 2. WIND LOAD (BASIC WIND SPEED) 80 MPH (1993 BOCA)
- 3. FLOOR (ROADWAY) 85 PSF AASHTO PEDESTRIAN

AASHTO STANDARD SPECIFICATIONS FOR HIGHWAY BRIDGES (1992 WITH INTERIMS)
AITC TIMBER CONSTRUCTION MANUAL
NDS 1991 NATIONAL DESIGN SPECIFICATION FOR WOOD CONSTRUCTION

B. BACKGROUND

- 1. THIS BRIDGE IS TO BE BUILT IN GENERAL CONFORMANCE WITH THE 1820 PLANK-LATTICE DESIGN PATENTED BY ITHIEL TOWN (1784-1844) OF NEW HAVEN, CONNECTICUT.
- 2. THESE DRAWINGS REPRESENT A RECONSTRUCTION OF THE AUCHUMPKEE CREEK COVERED BRIDGE (CA. 1892) WHICH WAS DESTROYED BY FLOODS IN 1994.
- 2. THE 1892 BRIDGE WAS BUILT BY THE FIRM OF HERRING AND ALFORD. DR. J. W. HERRING, A NOTED BRIDGE BUILDER, PRODUCED THE PLANS AND SPECIFICATIONS FOR THE 1892 BRIDGE.
- 2. THE 1892 BRIDGE WAS HISTORICALLY KNOWN AS THE HOOTENVILLE BRIDGE IN REFERENCE TO NEARBY HOOTENVILLE.

C. FOUNDATIONS

- 1. THE ASSUMED SOIL BEARING PRESSURE USED FOR DESIGN IS 2000 PSF.
- 2. ALL FILL SHALL BE PLACED IN EIGHT INCH MAXIMUM LOOSE LIFTS AND SHALL BE COMPACTED TO A MINIMUM OF 95 PERCENT WITH ASTM D-698 (STANDARD PROCTOR METHOD).

D. STONE WORK

- 1. STONEMWORK SHALL MATCH THE ORIGINAL STONE PIERS IN MATERIAL AND WORKMANSHIP.
- 2. RE-WORK THE EXISTING PIERS AS INDICATED IN THE DRAWINGS BY PLACING TIE STONES AT CRITICAL LOCATIONS SUCH AS AT CORNERS. TURN THE BEST SIDE OF REPLACEMENT STONES FACING OUT.

E. HEAVY TIMBER CONSTRUCTION

- 1. SOUTHERN PINE LATTICE MEMBERS SHALL BE NO. 2 DENSE, GRADED IN ACCORDANCE WITH SOUTHERN PINE INSPECTION BUREAU GRADING RULES. PROVIDE CERTIFICATE.
- 2. STRUCTURAL LUMBER SHALL BE ROUGH SAWN CONFORMING TO NO.2D SOUTHERN PINE GRADED IN ACCORDANCE WITH SPIB GRADING RULES. TIMBER FOR OPEN ROOF SHEATHING SHALL BE S4S PRESSURE TREATED NO. 2 SOUTHERN PINE GRADED IN ACCORDANCE WITH THE SOUTHERN PINE INSPECTION BUREAU. TIMBER FOR RAFTERS, AND BLOCKING MAY BE LOCAL SPECIES EQUIVALENT TO NO. 2D RED OR WHITE OAK GRADED IN ACCORDANCE WITH THE NORTHEASTERN LUMBER MANUFACTURERS ASSOCIATION OR THE NATIONAL LUMBER GRADES AUTHORITY. DO NOT APPLY GRADE MARKS.
- 3. FABRICATION AND CONNECTIONS SHALL CONFORM TO AITC TIMBER DESIGN SPECIFICATIONS AND TRADITIONAL TIMBER METHODS FOR COVERED BRIDGE REPAIR AND CONSTRUCTION AS PRACTICED BY ARNOLD GRATON OF ASHLAND, NEW HAMPSHIRE.
- 4. MATERIALS AND EXECUTION SHALL FOLLOW THE REQUIREMENTS OF THE 1991 EDITION OF THE NATIONAL DESIGN SPECIFICATION FOR WOOD CONSTRUCTION PUBLISHED BY THE NATIONAL FOREST PRODUCTS ASSOCIATION.
- 5. ALL BOLTS AND KEEPER PINS SHALL HAVE WASHERS AT TIMBER BEARING LOCATIONS. WASHERS SHALL BE CAST IRON AS DETAILED.

- 6. DRILLING FOR TRUNNELS IN THE FIELD MUST BE VERY ACCURATE. ALL HOLES IN TIMBER MUST BE SQUARE TO THE FACE OF THE MEMBER. A TIGHT FIT REQUIRING EXCESSIVE FORCE IN DRIVING TRUNNELS IS NOT RECOMMENDED.
- 7. TRUNNEL BORING BITS SHALL BE KEPT SHARP IN ORDER TO PRODUCE ACCURATE HOLES OF UNIFORM SIZE.
- 8. TRUNNELS SHALL BE MADE OF CLEAR, AIR DRIED WHITE OAK, TURNED ON A LATHE. THE ORIGINAL TRUNNELS WERE TRIMMED WITH A DRAW KNIFE.
- 9. LATTICE AND CHORD TIMBER SHALL BE DRIED TO A MOISTURE CONTENT OF 16%.
- 10. THE LATTICE TRUSS SHALL BE CAREFULLY FITTED AND CLAMPED TOGETHER.
- 11. CHORD JOINTS ARE TO BE "SAWED-UP" TO ENSURE CLOSE TO 100% BEARING AT MEMBER ENDS.
- 12. HOLES FOR TRUNNELS SHALL BE BORED WITH A TRIPOD MOUNTED DRILL USING TEMPLETS TO MARK TRUNNEL HOLES.
- 13. TRUNNELS SHALL BE MANUALLY DRIVEN WITH A 16 POUND HAMMER, UTILIZING A STEEL DRIVING CAP.
- 14. LATTICE MEMBERS SHALL BE LAID UP WITH THE HEART SIDES TOWARDS EACH OTHER.
- 15. ALL BRIDGE COMPONENTS MUST BE PROPERLY BRACED TO RESIST ALL FORCES ENCOUNTERED DURING CONSTRUCTION.
- 16. FLOOR SHALL BE 2x8 RED OR WHITE OAK AT WHEEL RUNS AND 3x10 TRANSVERSE S. PINE ON 3x10 STRINGERS.
- 17. FOR FACE NAILING FLOOR DECK USE 3/8 INCH DIAMETER x 8 INCH LONG ANNULARLY THREADED HOT-DIPPED GALVANIZED DECK SPIKES AS PRODUCED BY INDEPENDENT NAIL INC., BRIDGEWATER, MASS., 02324, (508) 697-6992.
- 18. PRESERVATIVE FOR BRUSH ON AND DIP APPLICATIONS SHALL BE OSMOSE CLEAR WOOD PRESERVATIVE, PRODUCT NUMBER 201, CONTAINING ZINC NAPHTHENATE. CONTACT OSMOSE WOOD PRESERVING, INC., GRIFFEN, GA., (800) 522-9663. APPLY PRESERVATIVE BY BRUSHING TO THE CUT ENDS OF TIMBERS.
- 19. THE CONTRACTOR SHALL MATCH ORIGINAL DETAILS AS FOUND IN THE SALVAGED PIECES OF THE BRIDGE WHICH REMAIN.
- 20. THE CONTRACTOR SHALL RE-USE AS MANY SOUND BRIDGE COMPONENTS WHICH REMAIN FROM THE PREVIOUS BRIDGE AS POSSIBLE EXCEPT THE LOWER CHORD SHALL BE CONSTRUCTED FROM TOTALLY NEW MATERIAL.
- 21. THE CONTRACTOR SHALL MATCH COMPONENTS BY SPECIES UNLESS STRENGTH OR AVAILABILITY CONSIDERATIONS DICTATE OTHERWISE.

F. CARPENTRY

- 1. SHINGLES SHALL BE EASTERN WHITE CEDAR. SEE SPECIFICATIONS.
- 2. SIDING SHALL BE NO. 1 HEART PINE, RANDOM WIDTH, PLANED TO A 7/8 INCH THICKNESS WITH THE HEART SIDE EXPOSED TO THE WEATHER.
- 3. SIDING NAILS SHALL BE 8d ANNULAR THREADED H. D. GALVANIZED SMALL FLAT HEAD, BLUNT DIAMOND POINT WOOD SIDING NAILS.
- 4. SHINGLE NAILS SHALL BE HOT DIPPED GALVANIZED STEEL, SLENDER SHANK, ANNULAR THREADED, 7/32 INCH DIAMETER FLAT HEAD NAILS.

G. MISCELLANEOUS STEEL

- 1. APPLICABLE STANDARDS:
 - A. "SPECIFICATION FOR THE DESIGN, FABRICATION AND ERECTION OF STRUCTURAL STEEL FOR BUILDINGS" OF THE AMERICAN INSTITUTE OF STEEL CONSTRUCTION.
 - B. "CODE OF STANDARD PRACTICE" OF THE AMERICAN INSTITUTE OF STEEL CONSTRUCTION.
 - C. "APPLICATION OF THE EXTRACTS FROM CODE FOR ARC AND GAS WELDING IN BUILDING CONSTRUCTION" BY THE AMERICAN WELDING SOCIETY.
- 2. STEEL FOR MISCELLANEOUS CONNECTIONS SHALL CONFORM TO ASTM A-36.
- 3. UTILIZE SQUARE HEAD ASTM A-307 HOT DIPPED GALVANIZED BOLTS WHERE INDICATED ON THE PROJECT DRAWINGS. PROVIDE OVERSIZED NUTS FOR GALVANIZING WHERE REQUIRED.

H. MISCELLANEOUS

- 1. THE STRUCTURAL DRAWINGS SHALL BE USED IN CONJUNCTION WITH AND COORDINATED WITH THE SPECIFICATIONS AND OTHER CONTRACT DOCUMENTS.
- 2. THE BUILDER-CRAFTSMAN SHALL VERIFY ALL EXISTING SITE CONDITIONS AS INDICATED OR NOTED ON THESE DRAWINGS. ANY VARIATION OF EXISTING CONDITIONS SHALL BE BROUGHT TO THE ATTENTION OF THE ENGINEER BEFORE PROCEEDING WITH CONSTRUCTION.

PROJECT NO. 95052
UPSON COUNTY
 STATION: N/A

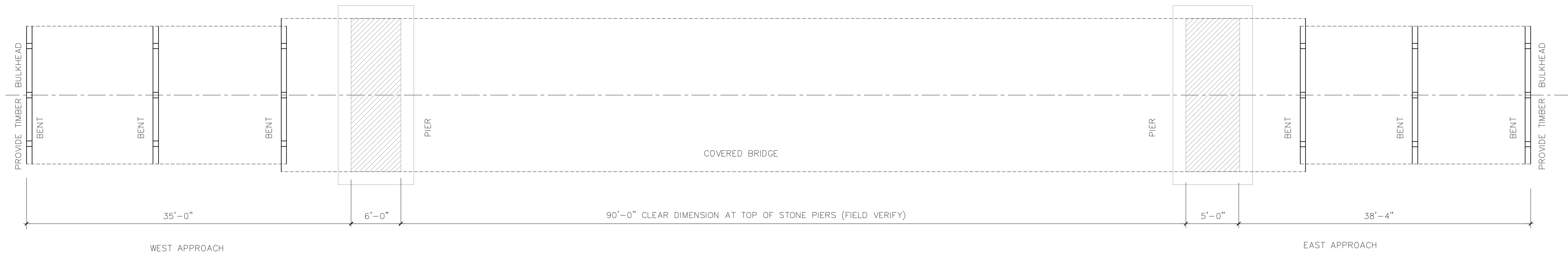
AUCHUMPKEE CREEK COVERED BRIDGE
 OVER AUCHUMPKEE CREEK
 THOMASTON, GEORGIA
 UPSON CO. GEORGIA

2.0 NW JCT. US 80 ON US 19, THEN 0.7 R. ON ALLEN RD.
 AUGUST 1995

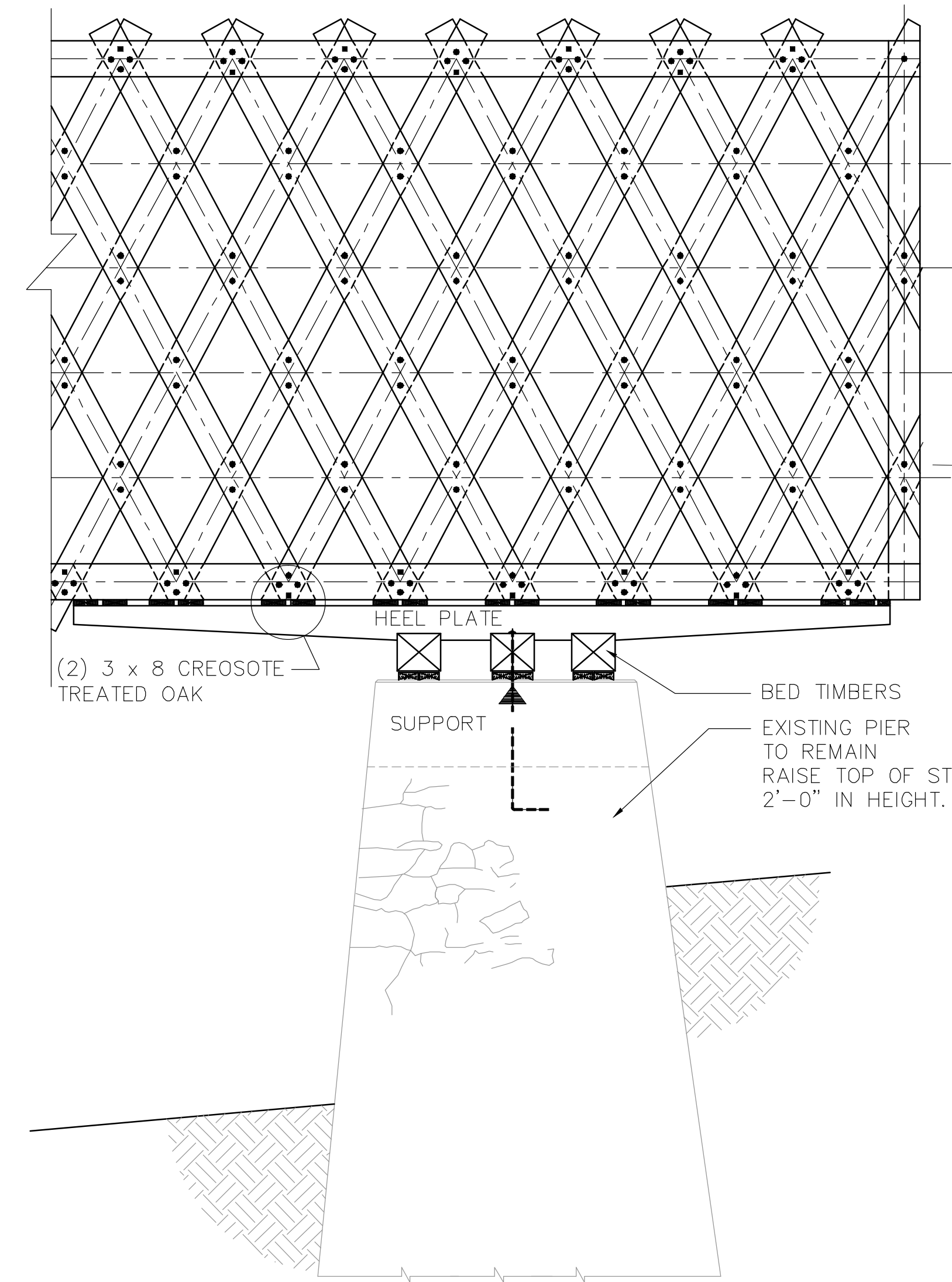


REVISIONS				SHEET No.
No	BY:	DATE:	No	
1			3	58 TOTAL SHEETS 9
2			4	

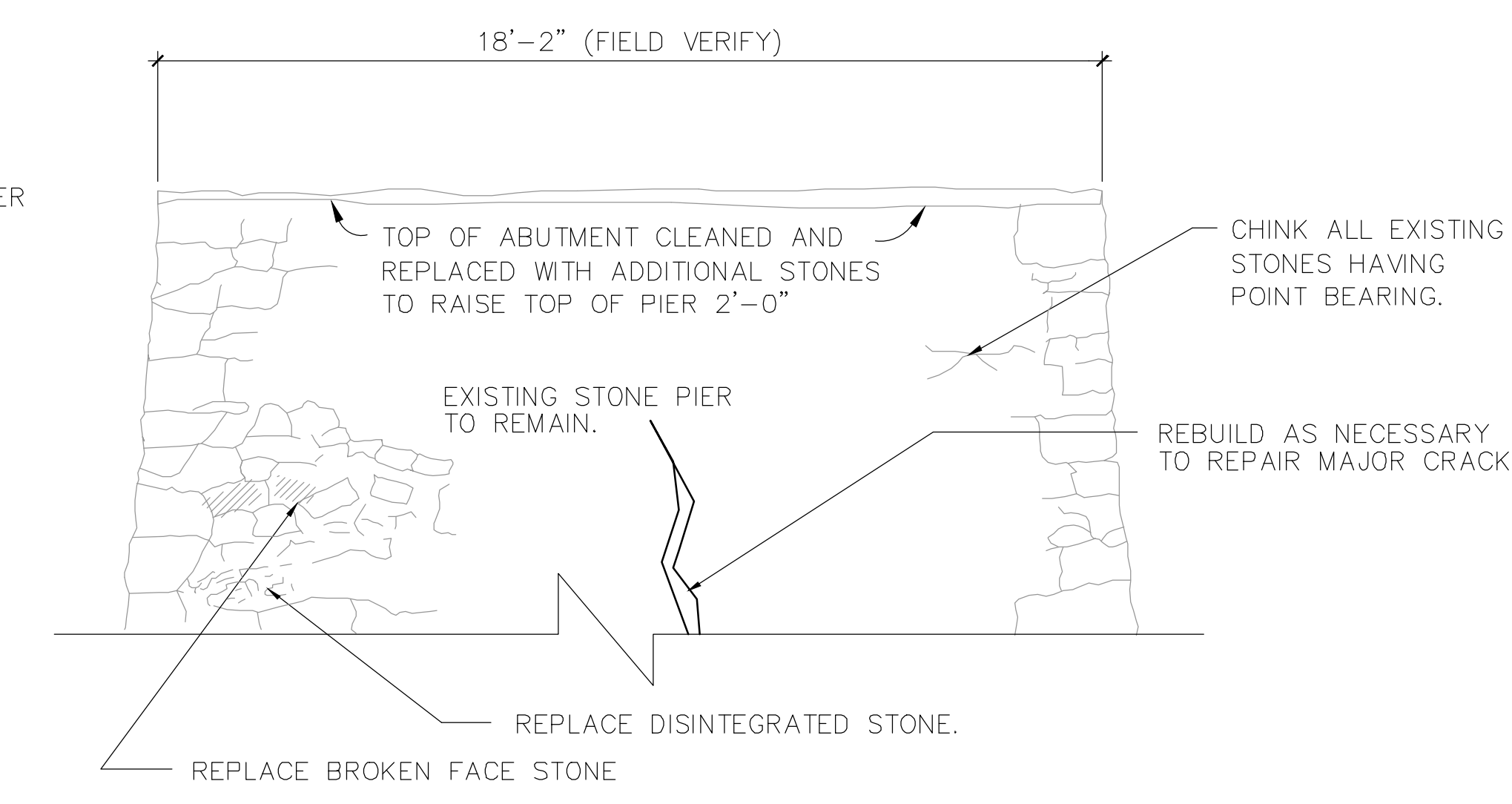
DRAWN BY : CG DATE :
 CHECKED BY : D.C. FISCHETTI DATE : 8/29/95



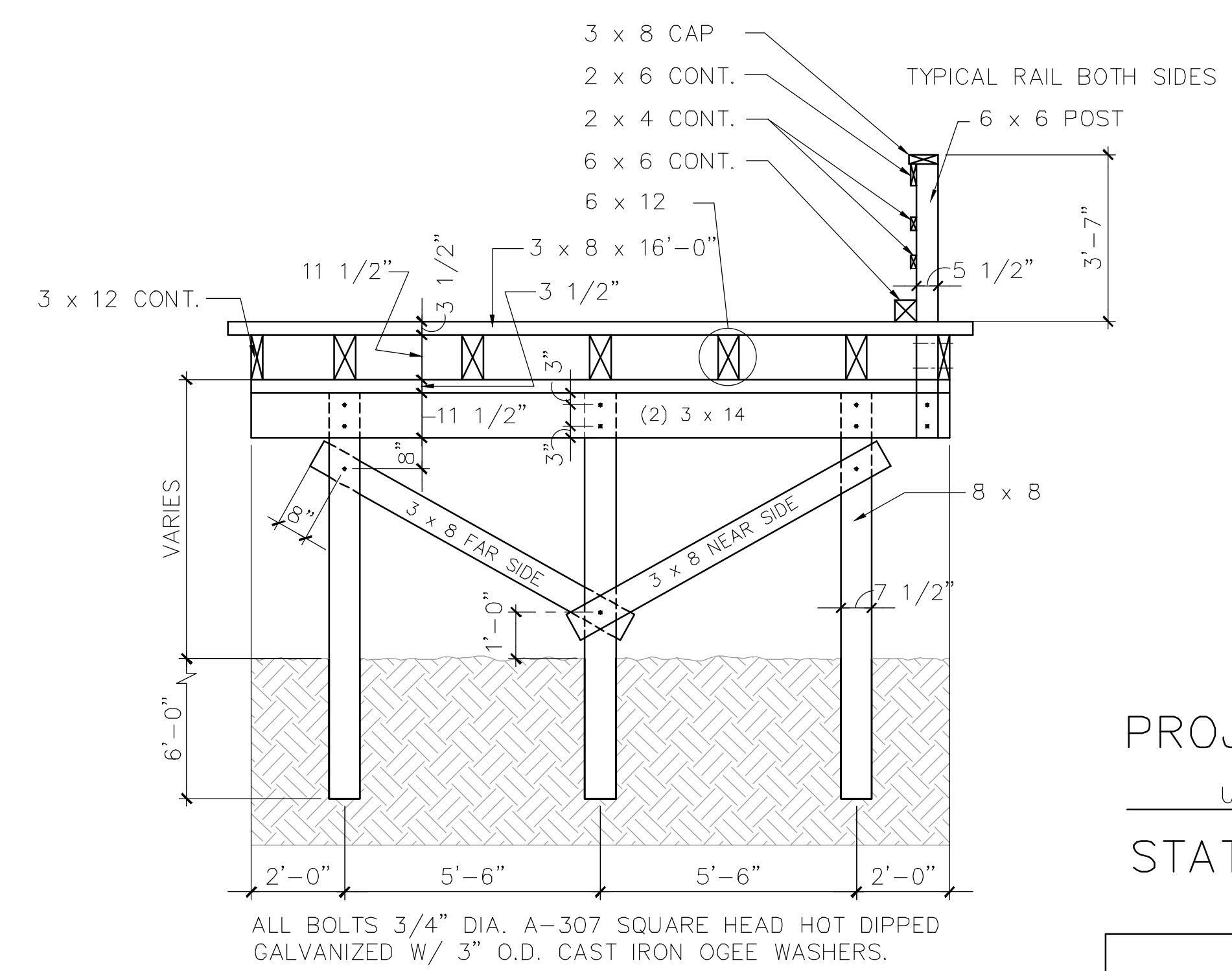
1 PLAN VIEW SHOWING BENT LOCATIONS
 S9 SCALE 3/16"=1'-0" (APPROX.)



2 DETAIL FOR BOTH PIERS
 S9 SCALE 3/8"=1'-0"



3 ELEVATION WEST PIER
 S9 SCALE 3/8"=1'-0"



4 TYPICAL BENT
 S9 SCALE 3/8"=1'-0"

PROJECT NO. 95052
 UPSON COUNTY
 STATION: N/A

AUCHUMPKEE CREEK COVERED BRIDGE
 OVER AUCHUMPKEE CREEK
 THOMASTON, GEORGIA
 UPSON CO. GEORGIA

2.0 NW JCT. US 80 ON US 19, THEN 0.7 R. ON ALLEN RD.
 AUGUST 1995

REVISIONS				SHEET No.		
No	BY:	DATE:	No	BY:	DATE:	TOTAL SHEETS
1			3			9
2			4			

