

PROGRESS DRAWINGS  
DO NOT USE  
FOR CONSTRUCTION

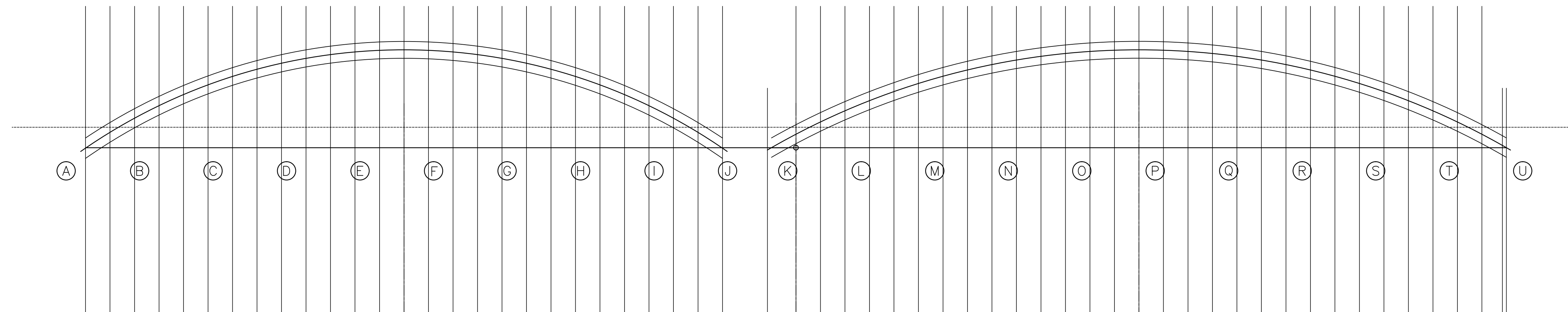
# WORKSHEET

# HAVERHILL-BATH COVERED BRIDGE 9/8/03

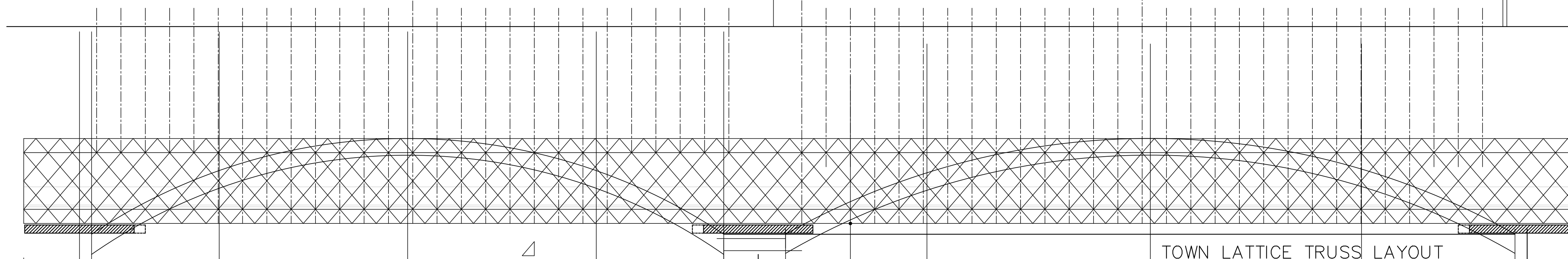
02044

## DCF Engineering, Inc.

P0 Box 879 ■ 109 Brady Ct. ■ Cary, NC 27512-0879  
DAVID C. FISCHETTI, P.E.

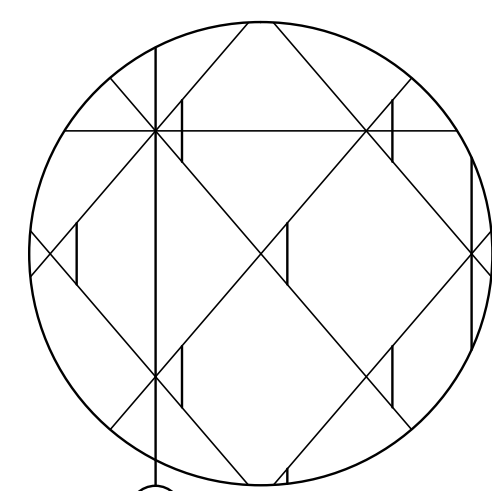


**ARCHES WITH HANGER RODS**  
NOT TO SCALE

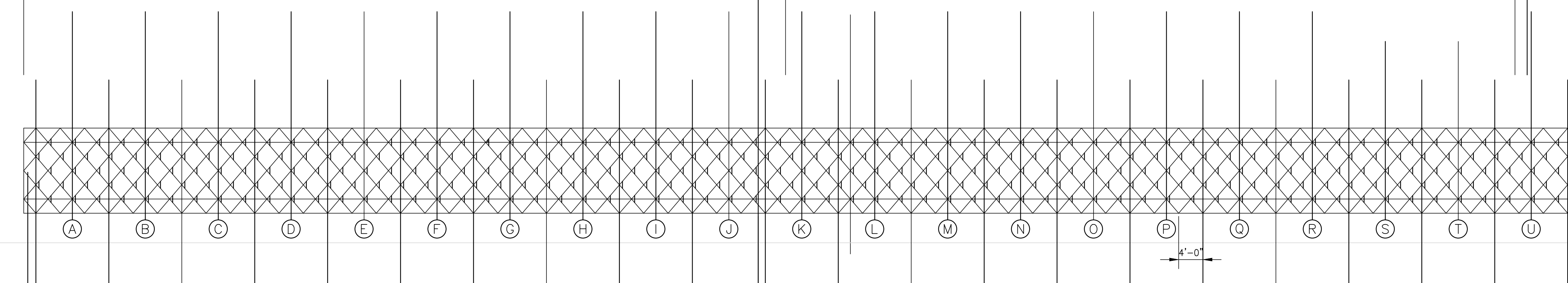


TOWN LATTICE TRUSS LAYOUT

**ARCHES WITH BOLSTER BEAMS**  
NOT TO SCALE



**DETAIL**



120'-2"

135'-4"

4'-0"

14'-0"

**TWO-SPAN TOWN LATTICE TRUSS**  
NOT TO SCALE